

Village Link

The Newsletter of Hotham, Everthorpe and North Cave
February - March 2022



Looking Forward to Spring - snowdrops



Carbon Conscious Architectural Services

☎ 01430 424611

✉ info@ralgreen.co.uk

Ralgreen Ltd | Chartered Architects
Unit 2 Westbridge Court, Annie Med Lane, South Cave | HU15 2HG | <http://ralgreen.co.uk>

Camera Surveys available - Member of NACS
Chimney Sweep from £40

PAUL DOBSON
Chimney Sweep



T: 07961 708 669

17 Springfield
Avenue, Brough

NIGEL CUNDILL DOMESTIC APPLIANCE REPAIRS



Prompt, Friendly Local
Service & Advice
30+ years Experience
Washers, Dryers,
Cookers
Dyson Servicing, etc.



Call Nigel

07962 467111 - ncrs@live.com

A. C. DAVEY FENCING



All types of Agricultural &
Garden Fencing

Gates Supplied & Fitted • Garden Clearance
Hedges & Shrubs Cut • Tree & Hedge Planting
Call Andrew on: 07957 881298

E-mail: andrewdavey@email.com



My Dream
Home...

Has a cow
and a chicken
in the garden

Find YOUR dream home at
CLUBLEYS



Charlotte
Age 4

J B Morton & Son

Funeral Director

51 Market Place, South Cave

Tel: 01482 352 199

Private Chapel of Rest

24 hour service

Proprietor M Garton & Son Ltd

THANK YOU

It is always nice when we hear that our efforts are appreciated!

We would like to thank our anonymous contributor for the following letter.

Dear Editor, all Village Link Staff, Contributors and Distributors

Thank you very much for your continued hard work in producing the very excellent publication - The Village Link. I look forward to receiving it and enjoy all the articles and important information, including all the dates of activities taking part in our village. It is an extremely useful life line for those of us dinosaurs who do not partake of Facebook. It has been an especially valuable magazine during lockdown and the continued Covid restrictions. None of this happens without the dedication of all you amazing volunteers.

Please keep up The Good Work and know how much it is appreciated.

THANK YOU

Also could you find a space to thank all the folk in our wonderful village who quietly volunteer and make North Cave a very special place to live:

- North Cave in Bloom for all those colourful planters and verges;
- The Bell ringers who welcomed in the New Year and keep ringing throughout the year;
- The guys who maintain the footpaths;
- The Village Hall Committee who keep that very valuable amenity ship shape;
- The folks who put up the sparkling fairy lights at The Memorial and the Christmas tree and decorations at The Village Hall - how fabulous they looked;
- The Parish Council for their dedication to improving our village;
- The WI for keeping spirits up and the very special Friendship Cafe;
- All the litter pickers who quietly remove other folks rubbish to keep our village smart;
- All the people who give a cheery greeting or wave.
- The postman!
- Plus all others who go the extra mile: Rev Barry and the Church, Maria, Sandra and Steph at Londis, Bill the road sweeper, Hairdressers and Marjorams.

A BIG THANK YOU TO YOU ALL FOR BRIGHTENING UP OUR DAYS

Market Weighton Shopper

This is a **"Hail & Ride"** service running on a **Friday** between North Cave and Market Weighton. See below for route and pick up times.

Mi-Bus Market Weighton

North Cave	09:30	Market Weighton	11:40
Hotham	09:40	Sancton	11:50
South Newbald	09:45	North Newbald	12:00
North Newbald	09:50	South Newbald	12:05
Sancton	09:55	Hotham	12:10
Market Weighton	10:00	North Cave	12:20

Bus passes accepted or pay on the bus.

Following Government guidance, Facemasks must be worn on the bus unless you are exempt from wearing one.

For further information please **contact** the office on 01405 780344 or visit our website www.goolegofar.org.uk #supportingruralvillages



ALLOTMENT PLOTS AVAILABLE

in

Old Garden, Hotham - start of February 2022.

Interested? Call: 01430 422208

What is all this Climate Change nonsense anyway?

Well, it's a relief to know that most people aren't worried about Climate Change. We are, after all, mostly above the 8m contour in this parish, so chances are that the sea won't be lapping at our houses anytime this century. Although its by no means certain that we'll be able to travel west to Leeds, by M62 or rail, or east to Hull. But keeping to the high ground, to the north, via Market Weighton and York, for example, should be fine. So folks are probably right, no reason to do anything rash just yet. Winter skiing holidays are still very much on the agenda, at least as long as the snow lasts ;)

The scientists certainly don't know everything, although worryingly, the one thing that has mostly taken them by surprise, is just how fast the predicted effects of climate change are kicking in. The polar ice caps, tundra and glaciers are melting rather more quickly than anyone expected. But so is the snow, which makes skiing tricky.

Some of the extreme weather that was predicted for the 2030's, 2050's etc appears to be with us today - 'global weirding' is a phrase that was coined a good few years ago, reflecting the fact that weather just isn't predictable anymore, whether that be drought, fire or flood. But, aside from some bits of flooding in 2007, 2012, 2014, 2016, 2019, and 2020, we have

mostly got away with it so far, apart from the people that flooded. Oh, and there was storm flooding in North Ferriby, Cottingham and Market Weighton in the summer of 2018, but that doesn't really affect us (unless we are going the long way round to Leeds!). So, overall, nothing too much to worry about. Food may get more scarce and expensive because of drought, but those of us that can afford it, will be happy to pay more.

It is slightly concerning that some parts of the world are predicted to become uninhabitable in the next decade or two (40°C at night, anyone?), resulting in population migration counted in the millions, which will make the current 'immigration crisis' into Europe look like a tea-party. Still, it might not happen - couldn't they just put the air-con on? At least, those with air-con? The other 95% will have to figure it out for themselves.

We might as well just carry on as if nothing's happening and, probably, it will all work out fine - at least for us, depending on our age. Maybe not so great for our children, or their children, but then, quite frankly, that is their problem, not ours. It will do them good to stand on their own two feet and sort out their problems for themselves. Don't you agree?

We would all love a bit more Mediterranean weather, wouldn't we?
How about this, 47°C in Seville, Spain, August 2021.
Or is that just a bit too hot?



Cristina Quicler/AFP via Getty Images



The Parish of All Saints North Cave: with St. John's North Cliffe and St. Oswald Hotham

CHURCH SERVICES

All Saints Church North Cave: 11.00am each Sunday
St. John's Cliffe: 9.15am on the 1st and 3rd Sundays
St. Oswald, Hotham: 9.00am on the 2nd and 4th Sundays

Rev'd. Barry Worsdale - Tel: 01430 470716
email: bworsdale@hotmail.co.uk

Humberside Police

Non emergencies use 101

Your neighbourhood Policing Team are available to offer advice on crime prevention and to listen and gather information on problems that you may be having in your area. If residents are unable to ring we are also able to visit your home for help and advice.

Please note that the Police can now issue dog-fouling tickets.

Many Thanks, Howden Policing Team



Bennys Cottage

21A Nordham
North Cave HU15 2LT
Cottages.com

2 Bedroom - one double bedroom and one single - semi-detached property sleeping 3 people. Great base for exploring the East coast and surrounding countryside.

Flexible arrival days, bookings taken for one night, weekend, midweek stays or longer. Free WiFi.

Contact: Simon 0787336348 or Sheryl 07848951730

simsam777@tiscali.co.uk

sheze61164@yahoo.co.uk



Volunteers needed

for our Great Daffodil Appeal 2022

Collection Hosts & Collectors

at Brough Morrisons

To find out more

Collection Hosts

What does a collection host do?
Some things involved are ensuring collection kits are on site ready for the collection, greeting collectors, counting & banking money

Contact your local Community Fundraiser - Kelly

 kelly.maton@mariecurie.org.uk
 07771963631



Registered Charity, England and Wales (207994) Scotland (SC038731)



Happy New Year



We would like to wish you all a very happy New Year. This term, the children's topic in EYFS and KS1 is 'Megastructures' and KS2 are learning about fair trade.

Please visit our website to keep up to date with all of our activities, including videos of our most recent class assemblies.

2022 Wishes for the World

The children in Class 3 and Class 4 have been thinking about New Year wishes that they would give to the world:-

I would give the world more land so that more animals can live happily.

I would give the world food because people could starve and all people deserve what they need.

I would give the world family time so they can enjoy their family.

I would give the world joy so people can have fun.

I would like to bring the world love so people can be happy.



Enjoying snowy days



For more information about our school please visit

www.northcave-school.co.uk

01430 422551

@NorthCavePS





We hope you all had a very Merry Christmas and a Happy New Year!

Our theme this half-term is 'Transport and Travel'. We will be learning about different vehicles on the road, in the sea and in the air. One week we will learn about driving a camper van, towing a caravan and staying in a tent!

We will also be celebrating Valentine's Day with some fun activities lined up.

Jill Marwood and her team are holding a Bingo in the Village Hall, with the proceeds going towards Preschool. Many thanks for their support.

We rely on our fundraising activities to keep running our service for families in the local community and appreciate the help you give. Last year we were able to update our outdoor space with a large playhouse for the children to enjoy.



North Cave Preschool

Open: 8.00am - 5.00pm
Term-time only
From 20 months of age



www.northcave-preschool.co.uk
northcavepreschool@hotmail.co.uk
07968 239303



Claire Kirby
Foot Health Practitioner

Walking on air
therapies

Foot Health Practitioner

+ Reflexology + Reiki + Hopi Ear Candling + Indian Head Massage

Mobile or Clinic in: The Old Estate Office, Fox Farm Complex
Drewton Estate, Drewton, South Cave HU15 2AG

www.walkingonairtherapies.co.uk

Email: claire@walkingonairtherapies.co.uk

Tel: 07789 595496



ASSOCIATION OF
REFLEXOLOGISTS



Mires
Beck
Nursery

Open for the sale of superb quality perennials, herbs and Yorkshire provenance wildflowers.

Opening hours:

March – September 10 till 4 every day

October – February 10 till 4 Mon-Fri

Low Mill Lane, North Cave

01430 421543

www.miresbeck.co.uk





D3 Office Group

Print / Workwear / Office Interiors

Hull: 01482 878737
Leeds: 01977 681068
Sales@d3office.co.uk



Update for Late Winter, 2022

We mentioned, back in August, that the WWSTF Technical Group would be looking at setting up projects. Between the Technical and the Steering Group, the initial ideas have been developed and refined. They are in two main groups: *strategic* and *site-specific*. They can be found on the website under the 'Projects' tab, but in summary, they are:

Strategic

1. Watercourse Management, Biodiversity & Water quality
2. Natural Flood Management: capacity, effectiveness, funding and delivery
3. Agriculture: soils, hedgerows, woodland - for carbon capture and water retention
4. Data capture: weather, rainfall amounts, river levels
5. Relationship of surface water and waste water sewer system
6. Schools: involving local primary schools in WWSTF's work

Site-specific

There is a range of projects, from Newbald to Ellerker, but the ones proposed in our area are:

Drewton Beck: conveys water from a large catchment east of North Cave, contributes around 25% of flow into the village. Scope to attenuate along Beck, some small valleys and wooded areas suitable, without affecting farmland.

Littlemoor Drain / Station Road / Finkle Street / North Cave Beck: Littlemoor Drain drains an area east of North Cave, passes under Station Road and the school in culvert and into the Croft. Storm water affects Everthorpe Ln, Station Rd, NC School, Finkle St, Westgate, & Blanshards Ln. Scope to detain water east of North Cave, within The Croft, and to divert Littlemoor Drain to the YW relief drain or overland to NC Beck. We hope

to have some news to report from ERYC in due course.

Nordham: Large local catchment drains to restricted culvert north of Nordham, which overflows during storms, affecting several houses on Nordham. Scope to detain some water in woodland to north, possibly also set-aside area and ditch north of gardens.

Ferry Beck: Water from Everthorpe and north of South Cave drains across farmland to be constrained at West End of South Cave, causing flooding. Scope to review drainage at Everthorpe and introduce NFM measures in farm ditches, to slow flow into West End.

As we note on the website under "*Is that it?*" No! This is just our initial list of possible 'quick wins' across the catchment. Of course, they will not be quick or easy, but they have been selected for a range of reasons, including: they have had flooding issues in recent years; there is work happening in the area within one of the Agencies' programmes; they represent a fair spread of WWSTF's efforts across the whole catchment. There are many more areas that we are interested in, and much more work to do.

For all of the above site projects, there has been some initial discussion with people affected, but it is at an early stage. We need to find out the feasibility, practicality and benefits of any interventions.

The links on the website are in draft - we are happy to work with anyone affected to develop the ideas so, as we say every time - get in touch!

Finally, a bit of good news. We have just been told that Environment Agency has allocated some funding to WWSTF for 2022-2023, which will help to pay for further feasibility work and potentially fund some work on the ground. Very exciting and a great vote of confidence in the catchment- and partnership-based approach.

Just as I begin to write this article, I've been watching yet another wonderful sunset.

Perhaps something of a compensation for another year of wondering how Covid is affecting us.

Whatever, your Village WI has still been very busy. December in particular was busy. Early in December we were happy to support Nicky Sugdon as she yet again organised Mission Christmas. It was good to see so many villagers supporting this cause.

In December the WI cafe provided a special Christmas lunch for the regular visitors to the cafe. And what a lunch it was; I think the ladies who regularly help in the cafe really excelled themselves. The food was fantastic. Special thanks must surely go to Hilary who organised this event; thank you Hilary for your untiring work in the cafe.

It was lovely to walk around the village as darkness fell and see how beautiful it looked. Thank you to all those who entered the Christmas Lights Trail and to Elizabeth Blackledge who provided the Trail map. Clare in Denmark Rise was the winner of the Lucky Dip prize. It would have been hard to choose an actual winner as there were so many wonderful displays. So, thank you to everyone who joined in with this competition.

Now, what next? Oh yes. A group of us joined together on the 20th and walked around the

Village to sing carols. A bonus was to find that a number of villagers joined us in the carol singing. Afterwards we enjoyed a convivial cup of tea and a mince pie in the Village Hall.

We also treated ourselves. The netballers enjoyed a Christmas Lunch at Cave Castle Golf Club and a large group of us went to the Dog and Duck in Walkington for an evening meal which was also very enjoyable.



The man in red and his assistants treated us yet again to a pre-Christmas visit. Fortunately a dry if rather chilly evening. Another joyful occasion and this year

preceded by the Grinch!! I wonder if North Cave will be on his regular list? Obviously I can't say more than that but I'm sure he and his helpers know how much we appreciate his visits.

Last but by no means least, a huge thank you to our bell ringers. I've lost count of how many times they rang the bells during December. I myself stayed up on New Years Eve just to listen to the church bells ringing.

The sound of Church Bells seems to me to epitomise a truly Village feeling.



On behalf of the WI, I would like to thank everyone for your support and wish you all the very best in 2022.

North Cave Parish Council News

Firstly, we'd like to wish everyone all the best for the New Year and hope it will be a good one.

Traffic Issues

Regarding the traffic problems we are experiencing in the village, as some of you are already aware, East Riding of Yorkshire Council have proposed some traffic calming measures for Blanshards Lane. This is a particularly dangerous thoroughfare for pedestrians as there is no pavement. EYRC have conducted a survey of the residents of Blanshards Way and the vast majority, 95%, are in favour of the proposed measures. However, some residents of Westgate have expressed concerns that they will increase the risk of flooding to their properties and are upset that they have not been consulted. We have raised these concerns with EYRC who are now going to carry out a flood assessment survey before the work is commenced.

Queen's Jubilee

We are still looking for volunteers to form a committee for the Queen's Platinum Jubilee celebrations next year. The committee would be responsible for overseeing the arrangements for a planned event to be held on Sunday 5th June 2022.

A member of North Cave Parish Council has volunteered to head this committee and if you would like to help with this in any way, please email Jackie North:
jenorth2@jenorth1.karoo.co.uk

Salt Supplies

With the icy conditions we are experiencing, if anyone in North Cave would like some salt to treat any pavement etc. in the vicinity of their houses, please email us at:

admin@northcave-pc.gov.uk

as we will shortly have a supply available behind the Village Hall.

Meetings

The minutes and agendas of each meeting will continue to be displayed in the notice board on the land adjacent to the Methodist Chapel on Westgate and also on the website:

www.northcave-pc.gov.uk.

Please note that the minutes of a meeting must be approved by the Parish Council before they are published so there will be some delay before they are made public. Our next meeting is planned for the **15th February at 7 p.m. in the Village Hall.**

In the meantime, if you have any compliments or complaints to bring to our notice, please write to the Clerk: Mrs. Sue Malton 16 Blanchard's Lane North Cave HU15 2LN; Tel 01430 421779 from 9 am to 2.00 pm Monday & Tuesday; 9 am to 12 noon Wednesday 9am to 1pm & Thursday between 3 - 5pm, or email:

clerknorthcavepc@hotmail.co.uk

Alternatively, please contact a member of the Council. Please note the Clerk does try to maintain the hours stated above although her hours are flexible. If she's not available during the hours stated, she does have an answer machine service, and will contact you at her earliest convenience. Thank you.

VACANCY

Due to retirement, we are recruiting for a Parish Clerk. This is a part-time position (16 hours per week over 4 mornings) currently working from home. Should you require further information or wish to apply, please contact the Chairman, Geoff Pile:
geoff.pile@talktalk.net



*** HOOK ***

Gardening Club

EAST YORKSHIRE

FOUNDED 2010



Over the past few weeks I have been thinking about the safety of our visitors to our Hook Gardening Club - East Riding of Yorkshire meetings and have taken the difficult, but safest, decision to cancel all indoor meetings for 2022, due to the ever increasing cases of covid variants especially at indoor gatherings.

I will continue with the outdoor fund-raising stalls throughout the year and hope to arrange some outdoor local garden visits over the summer months where we can all meet up #watchthisspace updates will be posted in the Goole Times where you can read my monthly gardening column www.hookgardening.club and on social media just search Hook Gardening club.

I know how garden club visitors are desperate to get back to 'normal' but the

safety of everyone is my priority.

We are hoping to run garden visits from May throughout summer and maybe even in September weather permitting. I am opening my garden for the National Garden scheme at the end of May too.

<https://ngs.org.uk/view-garden/33895> which may be of interest to your readers too.

I've organised a Hook Gardening club outdoor fund-raising stall taking place on Saturday 26th February next to 163 High Street, Hook DN14 5PL10- 12 Noon, selling pots of spring bulbs and home baking- everyone welcome.

Thank you for understanding & stay safe.

Justine (*Founder and organiser*)

Belgrave Cottage


5 Talisker Walk

The Bay - Filey

YO14 9GA

any questions
07535 633818
belgravemusic@aol.com

Situated on the beautiful East Coast at Filey
Well equipped self catering cottage
Sleeps 4 people (one double & one twin room)
Lounge/Dining Room, Kitchen, Bathroom/Shower,
two toilets, Patio
Bedding, Towels, Toiletries, all utilities & free
superfast WiFi included
Complimentary Indoor Swimming pool, Sauna &
Fitness Centre, Free Parking, 24 hour security &
10% Restaurant/Pub discount
Other facilities include Cafe, Restaurant, Shop,
Chemist, Archery, Table Tennis & Children's
Activities
10 min walk to one of the 'Best Beaches in the
United Kingdom'
Bookings taken for weekends/weeks/mid week/
flexible dates
Spring - Summer - Autumn - Winter

 Belgrave Cottage - for photos

"smell the sea and feel the sky.
let your soul and spirit fly"

A Wonderful New Year Ahead

We are very excited for the year ahead as we can hope to leave the severity of the pandemic behind. Our ambitious activities calendar is already filled up with lots of exciting events for you, your family, and your friends, and we hope to see you all here! Our teams are all back and preparing for our Grand Opening in Spring.

This year we will be celebrating the Queen's Jubilee by including royal-named plants in our stocks, and being part of the Queen's Green Canopy initiative, as well as other incredible successes!

The nursery is being royally prepared and new retail benches are arriving to ensure you have a fitting welcome! 2022 will see a focus back on the expansion of the facilities at Mires Beck and the enhancement plans drawn up by Ral Green Architects just prior to COVID 19 will be relaunched as part of a major fundraising project to realise this ambition for the next generation of service users.

Rural Business Awards

At the beginning of October, we found out that we had won the North of UK Best Rural Social Enterprise, Charity or Community Project Category at the 2021/22 Rural Business Awards. The National Finals are coming up in February where we will find out if we have won our category for the whole of the UK.



Karen being interviewed by Oli

Back in December, Oli, the videographer of the Rural Business Awards, kindly came to our nursery to professionally film us in preparation for winning the award. We will keep you updated and we all have our green fingers crossed! This would mean so much and we would use this platform to raise awareness of our work and the future needs of the charity.

February Jobs In The Garden

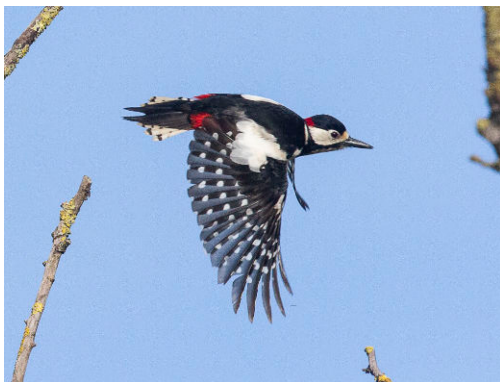
1. Prepare vegetable seed beds, and sow some vegetables under cover
2. Prune winter-flowering shrubs that have finished flowering
3. Divide bulbs such as snowdrops, and plant those that need planting 'in the green'
4. Prune Wisteria
5. Cut back deciduous grasses left un-cut over the winter, remove dead grass from evergreen grasses

North Cave Wetlands - Birds

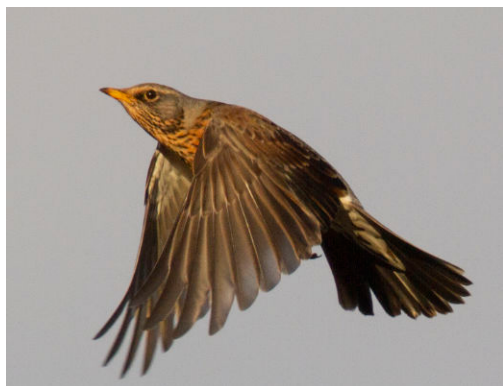
Below are some beautiful photographs taken at The Wetlands by Mike Ashforth



Chiffchaff



Greater Spotted Woodpecker



Fieldfare



Redshank displaying

Safe and Well Visits

Humberside Fire and Rescue service offer Safe and Well visits to our community. We provide information, advice and guidance tailored to meet individual needs.



Our visits can include:

- Home fire safety
- Smoke alarm testing
- Escape plans
- Health and well-being information
- Advice to keep you safe in your home



For further information and to check if you are eligible please visit www.humbersidefire.gov.uk or contact our Public Safety Team on:



0300 303 8242



www.humbersidefire.gov.uk



For information on a range of primary self-care tools and resources, please visit www.mecclink.co.uk



Helping to keep our community
'Safe and Well' with targeted support.



For further information please visit: www.humbersidefire.gov.uk

Countryside Concerns

In the half-light of a frosty January morning, I can just make out 6 or 7 well spaced blobs on the back fence - yes its the Blackbird gang hoping breakfast wont be too long. From July to November they are nowhere to be seen but as soon as the colder weather arrives they appear in larger numbers each day - 28 has been the maximum number in the garden at one time but for now they cluck away to each other as they wait for the door to open. Apart from the gentle song, of the Robin, there aren't any other birds about. A few handfuls of tasty meal worms scattered around sets the stage for the aerial ballet to begin as the garden becomes a bullies playground with some chasing each others around and not bothering to feed until they have a clear space around them and others with snapping beaks fight-dance up and down in the air, its comical really and you have to smile at their antics.

My friends in Newport have again reported on the arrival of the Goosanders on the canal at the beginning of the year and have also seen more of them on the brickyard ponds. This will be the third year but they never stay around to nest. Walking back from the paper shop they were thrilled to see a Heron catch a fish from the canal and down it in one and could see it sliding all the way down its throat. Another friend in Yokefleet told me that there were fresh-water oysters in the tidal dykes around their area, something that I'd never imagined but the discarded shells on the bank tops shows that the bird population knows exactly where the best dining is! The field next to the railway crossing on Green Oak lane outside Gilberdyke, proved to be another revelation to me when I counted 8 Magpies in a flock - naturally I made a wish as instructed in the nursery rhyme.

I was delighted when the Knepp estate was a feature on a programme with David Attenborough on Bird Song. I wrote about it a year or so ago on how they had let the 340 acre farm return to nature as a re-wilding project. It was great to see how quickly the land had reverted back to nature

and how the number of insects, birds and mammals had increased more and more as the countryside reverted back to how it used to be in pre 1930's. They now boast the largest number of Nightingales year on year and now have 40 nesting pairs around the estate and also have increasing numbers of Turtle Doves returning to breed and also Crane's have made a return after becoming extinct over 100 years ago.

It's so good to know that more people are taking the plight of our lovely world on board and going the extra mile to put things right but there is still a huge amount to do before we can halt global warming, something I don't think I will see in my lifetime but I sincerely hope my grandchildren will live to see. At least the world has come to realise how desperate our planet is for some TLC and are now replanting forests and clearing rivers of rubbish and invasive plants that harm our ecosystems but it doesn't stop there, now they have to tackle the problem of Nitrates, Phosphates and Antibiotics that are leaching out of the land and into our waterways killing fish and wildlife and starving the waters of oxygen. It's high time the governments of the world developed some back-bane and not be so forgiving to all the conglomerates and multi-nationals that cause a lot of the problems. It's time to man up and get tough!

On a more gentle note, its so nice to see the return of blue skies and sunshine at last after the dark, dismal end to the old year and start to look forward to Aconites and Snowdrops to cheer us up as we plan our gardens and allotments for a super summer where Covid passes into history and we can all PARTY!!

Cheerio

Wendy

January 2022



- A TRANQUIL, PICTURESQUE SETTING
- CATS ONLY, NO DOGS BOARDED
- EXTRA LARGE HEATED CHALETs WITH STUNNING VIEWS
- FAMILY RUN BY FAB TRAINED HUSBAND AND WIFE TEAM



01430 421975

www.evergreencattery.co.uk

email: cats@evergreencattery.co.uk

6 Station Road, North Cave, East Yorks, HU15 2LA

Nordham Cottages

www.nordhamcottages.co.uk

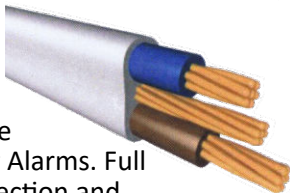
North Cave HU15 2LT

Bay Tree, Horseshoe & Baker's Cottage
4* accredited, inter-connecting holiday cottages
1, & 3 bedroom cottages with 2 bathrooms Ideal
for 'Nearest & Dearest', friends or colleagues
Weddings, 'family gathering' & business stays
Reservations taken for w/e, mid-wk, wk & longer
Restored cottage-barn 'events space' for meetings
Contact: Louise Martin

01430 422266 or 07951745033

louisem200@hotmail.co.uk

D.A. GILES (ELECTRICAL) LTD.



New builds,
Re-wires, Fire
and Intruder Alarms. Full
testing, inspection and
certification. New
consumer unit (fuse board). CCTV.
Large or small - we cover them all.

Free quotations:

Tel: 01430 470842

Mb: 07778 644002

Mb: 07825 092868



ACCOUNTANCY SERVICES

Focus on what you do best and let us take care of the
distractions. We specialise in supporting small businesses
and can help with:

- Self Assessment Tax Returns
- Bookkeeping & VAT
- Business Accounts
- Payroll & RTI
- Corporation Tax
- ...and much more

We are based in Beverley and North Cave and cover
all surrounding areas. To arrange your free, no
obligation, meeting call us today on **01482 235363** or
visit us online at www.taxassist.co.uk/beverley.



Marjoram Nurseries

01430 424493

Woodside House, Low
Road, Everthorpe

Hanging Baskets - Basket & Patio Plants

Bark Chippings - Multi Purpose Compost

BEDDING PLANTS - PALMS

Rockery Plants,

Perennials & Shrubs

Fresh Vegetables

British Hand Made Glazed Pots



HAWLEYS AUCTIONEERS & VALUERS

**Single items to full homes cleared Valuations given
for insurance,
probate and sale**

Albion House, Westgate, North Cave, HU15 2NJ Contact John or
Caroline Hawley - 01482 868193 Mobiles: John 07850 225805

Caroline 07980 624583

email: info@hawleys.info

www.hawleys.info

"Horses shouldn't be on the road!"

We know this comment, and similar comments, are often muttered when we venture to ride our horses out on the road. Horse riders and tractors - the bane of those who travel through rural areas!

My horse, Prince, and I both live in South Cave where bridledways are limited and access to any that are available involves riding on the road. We are not alone in this struggle with horse riders across the UK having access to only 22% of Public Rights of Way, and this number is dwindling.

Prince has spent a lot of time on 'hacking only' orders from his vet in the last year due to injury (for the non-horsey: 'hacking' is riding away from the arena/yard) and the routes available to us to carry out these orders consist largely, if not entirely, of road work. During our hacks we have experienced countless instances of other road users passing too close, too fast or both. It's terrifying and again, we are not alone.

1,010 Road Incidents were reported to The British Horse Society between February 2020 and February 2021 (during a time road traffic was in decline due to Lockdown). Of these incidents 46 horses died and 118 were injured, 130 riders suffered personal injury (rider fatalities and driver injuries/fatalities not reported). It is thanks to the efforts of the BHS that we have seen the recent change in guidance offered by the Highway Code for passing horses - drivers must pass at a speed of 10mph or less and at a distance of at least 2 meters.

I take all the precautions I can when I ride out. I wear hi viz, Prince wears hi viz, I use clear hand signals and wear a camera. Not only is the camera potentially vital if something awful did happen, but it happens to be a good deterrent for hazardous driving and has proved useful when reporting near misses.

I try to be as courteous and considerate as possible and always thank road users that pass us safely and considerately. I am lucky enough that most of the time it is safe for me to raise my hand to thank drivers,

however, some riders cannot safely let go of their reins and will nod or smile instead. I always pull over where possible to

allow traffic to pass, I don't want to hold up anyone's day! Every rider I've ridden with locally operates the same tactic - it isn't in our best interests to hinder/annoy locals and we are conscientious people.

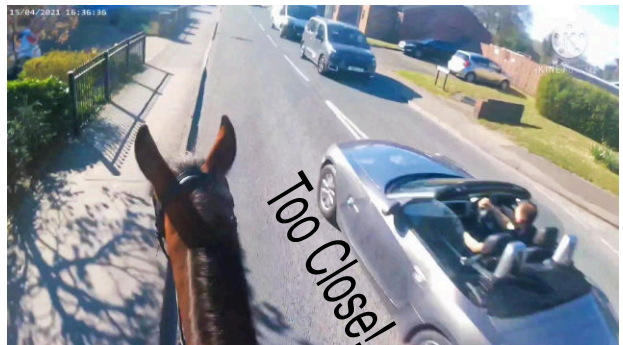
Despite taking all efforts to be safe, seen and courteous, the fact remains - I can say with absolute confidence, every time I have hacked out, at least one road user has passed us unsafely.

The majority of local drivers are brilliant! But it only takes that one road user per hack to cause a horrible accident that makes myself and my beautiful horse one of those statistics mentioned above, not to mention the driver and passengers also. It is that one road user per hack I am pleading to.

We don't ask you to like us, or even understand us (most horse owners will wholeheartedly agree, we're absolutely bonkers!) but please consider not only our safety but our horse's safety, and your own. You can mutter if you like, even throw us a look. Just pass wide, just pass slow. That's all we ask.

I want to extend a huge thank you to every road user who takes the time to pass wide and slow - our horses are our world and it means so much for you to consider our safety! We live in such a beautiful area, it is a shame not to enjoy it together.

Devon Storey



Directory Of Organisations And Events

CATHOLIC CHURCH: Our Lady of Perpetual Help, Sancton Road, Market Weighton. Mass Saturday 5.30 pm & Sunday 10.30 am. Holy Day Mass 7.00 pm. Weekdays Mass as announced. Fr. David Standen tel. 01430 873202 or email stmarystjohn@rcdmidd.org.uk website: www.stmarystjohn.org.uk

CHURCH OF ENGLAND - ALL SAINTS NORTH CAVE, ST. OSWALD HOTHAM, ST JOHNS NORTH CLIFF: Contact details for Priest in Charge: The Rev. Barry Worsdale, The Vicarage, Church Lane, North Cave HU15 2GJ Tel: 01430 470716 email: bworsdale@hotmail.co.uk

NORTH CAVE WOMEN'S INSTITUTE: meets in the Village Hall on the **FIRST** Thursday of each month at 7.30pm. There is a varied programme of speakers, demonstrations etc attended by approx. 30 members. A warm welcome is offered to any ladies who would like to join. For information contact Barbara Young on 01430 423608 or email northcavewi@eastyorkshirewi.org.uk

EAST RIDING CHILDREN'S CENTRE: Monday 9.00am until 3.30pm, Tuesday 9.00am until 5.00pm and Wednesday 9.00am until 2.30pm. For more information and to register, call Lisa Howell (family support worker) on 01482 669474

NORTH CAVE PRE-SCHOOL: VILLAGE HALL: Open Monday - Friday (term time) 9.00am - 3.00pm plus 'lunch clubs' and 'rising fives' sessions. From age 2½. Contact: Julie Tooke, tel. 01430 441547 / 07968 239303

NORTH CAVE VILLAGE HALL: Westgate, available for all kinds of functions. All enquiries to the Booking Secretaries: Eva Dayes 01430 423111 or Maggie Whitlock 01430 424023.

HOTHAM VILLAGE HALL: Newly refurbished with excellent facilities - available for all kinds of functions. All enquiries to the Booking Clerk Mrs. Pam Johnson, tel. 01430 425285; or Freda Brocklesby, tel. 01430 421095 email: brocklesby678@btinternet.com

NORTH CAVE PLAYING FIELDS ASSOCIATION: (includes the Play Area). Registered Charity No 523277. Contact Hon. Sec. John Backhouse. e-mail john.backhouse1@googlemail.com

NORTH CAVE SPORTS AND SOCIAL CLUB: The Pavilion, The Playing Fields, North Cave. Small friendly club, annual membership £5, all profits go to the Playing Fields/Play Area. Contact Hon. Sec. John Backhouse. e-mail john.backhouse1@googlemail.com

NORTH CAVE FOOTBALL CLUB: Two adult football teams, new players welcome. Contact Hon. Sec. John Hewson, tel. 01430 422283

NORTH CAVE CRICKET CLUB: Two teams playing on Saturday afternoons and Tuesday evenings. New members (especially juniors) welcome. Practice evenings Thursday nights during the season. Contact Hon. Sec. Craig Hewson, tel. 01430 422909

EAST YORKSHIRE CANOE CLUB: Sessions every Saturday morning, South Ings Lane, Newport Road, North Cave. Beginners welcome. Contact Charles McCaffrey Tel. 01482 867754 or 07813042417 or info@eycc.org For more information see the website: www.eycc.org

NORTH CAVE INDOOR BOWLS: Townend Lane, North Cave, tel. 01430 421378. Open 10.30am to 10.30pm in Winter, from early September until the end of April.

CAVE PLAYERS: Amateur Drama Group. Rehearsals take place in South Cave at the WI Hall and performances take place in North Cave at the Village Hall. For information contact chair, Sharon 01482 840404 or sec. Neil, 01430 424497. For tickets, contact Malcolm 01430 422073 or visit www.caveplayers.co.uk

DENTIST: Church Street, South Cave. Weekdays 9am to 6pm. Saturdays 9.15am to 12 noon. By appointment, tel. 01430 423826

OPTICIAN: John Tomlinson based in North Newbald. Tel. 0800 9775994

SOUTH CAVE SCOUTS: Beavers: 6-8s, Cubs: 8-10½s, Scouts: 10½-14s, Explorer Scouts: 14-18s. If To add a name to the Group's waiting list email: southcavescoutingmembership@gmail.com. Anyone with a general enquiry should contact Claire Moverley, Assistant Group Scout Leader on 07803247324.

RAINBOWS, BROWNIES AND GUIDES: 01430 421504 or <https://www.girlguiding.org.uk>

EAST RIDING CARERS' SUPPORT SERVICE: tel. 0800 9176844

MEDIBUS: Door to door service to Beverley, Cottingham, Hull Royal, Goole and Scunthorpe Hospitals from your front door. tel. 03456 445959 (charged at local rate).

DOCTORS' SURGERIES:

South Cave:

Emergencies and Enquiries	424764
Appointments	422206
Repeat prescriptions	422495

Gilberdyke:

Emergencies and Enquiries	440225
Appointments	440225
Repeat prescriptions	440225

MOBILE LIBRARY: Any queries, tel. 01482 392749 or check on line: www.eastridinglibraries.co.uk

North Cave: Wednesday - *every four weeks from 9th December 2020*

Outside No. 30 Newport Road - 10.05am- 10.20am

POST OFFICE: At Londis Cave News, Church Street, Weekdays 6am - 8pm, Weekends 7am - 8pm

POLICE: For non-emergency calls contact your Local Policing Team, tel. 101 (24-7), or e-mail

Police Community Support Officers:

PS David Lonsdale	email david.lonsdale@humberside.pnn.police.uk
PC Jack Dominic	email jack.dominic@humberside.pnn.police.uk
PCSO Anthony Mell	email anthony.mell@humberside.pnn.police.uk

BELL-RINGING: Join us at All Saints' church on practice night Tuesdays from 7:30-9pm or before Sunday morning service from 10:30-11, or contact Bill on 470868 for more details.

ANTI-SOCIAL BEHAVIOUR: (Environmental Services)

Noise etc. S Shuttleworth, tel. 01482 396203, out of office hours tel. 01482 393939

YOUR LOCAL COUNTY COUNCILLORS:

Victoria Aitken (NCave) tel. 07721 411620 | Nigel Wilkinson (Eastrington) tel. 07717 364525
Linda Bayram (NCave) 07956 310720 linda@cbayram.karoo.co.uk

NORTH CAVE PARISH COUNCIL: Contact the Parish Clerk in writing: Mrs Sue Malton, 16 Blanshards Lane, North Cave, HU15 2LN; Telephone: 01430 421779 during normal office hours: Monday and Tuesday 9am - 2pm; Wednesday 9am - 1pm; Thursday 9am - 12noon, or e-mail: clerknorthcavepc@hotmail.co.uk

FLOOD WARDEN: Mr Paul Andrew Morris, Church Street, North Cave. Mobile: 07932000558

CAVES U3A: Speakers meetings at Cave Castle on the first Monday in the month at 2pm except on Bank holidays when it is deferred for a week. Contact Sec. Bernice Maitland. Tel. 01430 421960

The Parish Council has taken over the upkeep and maintenance of the **Defibrillator**, which is sited on the front of the **Village Hall**.

If you are unfortunate enough to need to use the machine: **ring 999** and wait for instructions. Keep doing CPR whilst you wait for the defib or the ambulance to arrive.

After use, please inform the clerk on 01430 421779, so that the pads can be replaced.

Would you like to advertise here?

Cost: £40 p.a. for 6 editions

Contact:
The Editors
editor@villagelink.info

NORTH CAVE INDOOR BOWLING CLUB

Would you like to come and try Indoor Bowls?
Gentle exercise in a warm, friendly, environment?

Open every day from 10:30a.m.

Call and have a cup of coffee - see what it's all about
Townend Lane, North Cave, HU15 2LZ

Call: 01430 421378 - Email: eileen_hebden@verizon.net

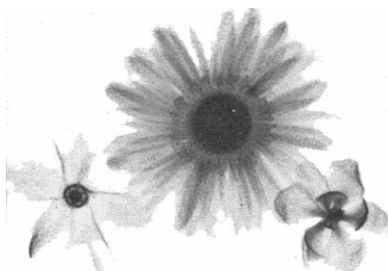
www.northcavebowls.co.uk



Curlaway

Unisex Hair & Beauty Salon

1 Orchard View, Church Street
North Cave



01430 423712

Incorporating
Beauty and Feet Therapist - Alla
"A Beauty Lounge"

G. GREAVES PLUMBING & HEATING

Tel: 01430 266 130

Mob: 07429 173 175

email:
gavdaplumber@hotmail.co.uk

68 MAIN ROAD
NEWPORT
BROUGH
HU15 2PP



Specialist
Heating Systems

- Kitchen & Bathroom Installations
- Central Heating Systems
- Boiler Breakdowns



- Annual Service and Landlord Safety Inspections & Repairs
- No Call Out Charges
- Free Quotes



Sterling Partnership Ltd Financial Advisers

9 Flemingate, Beverley, HU17 0NP

Professional and Friendly Financial Advice

- Savings & investments
- Personal Pensions & Annuities
- Tax Efficient Advice
- Life Assurance & Family Protection
- Existing portfolios reviewed
- Inheritance Tax Planning

Daytime & Evening Appointments Available

Tel: 07738 120675

Email: terry.ward@sterling-partnership.co.uk

William's Den

**RESTAURANT OPEN TO
THE PUBLIC**

Did you know that you can eat in our
restaurant without an Adventure Play
Ticket?

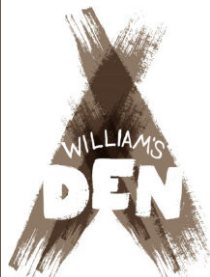
Come and enjoy our delicious food including
Wood-fired pizzas, fish and chips, homemade ice
creams and more. Or just
pop in for a coffee and cake.

Best wishes,
Christian and Tor Carver

Contact us

by email:
hello@williamsden.co.uk

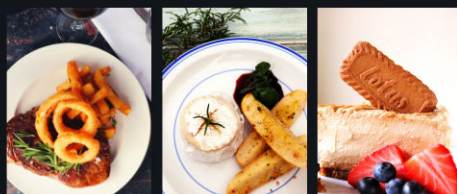
or phone:
01430 472230



The Hotham Arms

DELICIOUS FOOD & GREAT SERVICE

OPEN 7 DAYS A WEEK



20 MAIN STREET , HOTHAM , YO43 4UD

P: 01430 422939
W: WWW.THEHOTHAMARMS.CO.UK
E: HELLO@THEHOTHAMARMS.CO.UK

Local Businesses - Use them or lose them

Business/Service	Name	Address	Telephone Number
Accommodation for visitors	Nordham Cottages	9 and 11 Nordham, North Cave	07951 745033 / 01430 422266
Accommodation for visitors	Belgrave Cottage, Filey	Belgrave Farm, North Cave	07535 633818
Accommodation for visitors	Bennys Cottage	21A Nordham, North Cave	0787336348 / 07848951730
Accountancy	TaxAssist Accountants	12 Westgate, North Cave	01482 235363
Aerial / Satellite /lcd installations	Chris Chapman	Westgate, North Cave	07739 583300 / 01482 342944
Architectural Services, H&S	Ralgreen Ltd	Westbridge Court, Annie Med Lane	01430 422437
Auctioneer and Valuers	Hawley Auctioneer and Valuers	Albion House, Westgate	01482 868193
Bespoke Tailor and Shirtmaker	Robert James	36 Main Street, Hotham	01430 425435
Boarding Cattery	The Cat's Cradle (Vicky Herd)	Cavewood Farm Common Lane	01430 425554
Boarding Cattery	The Mews Cattery	Market Weighton Road	01430 422605
Boarding Cattery	Evergreen (Sarah Page)	6 Station Road	01430 421975
BP Service Station 7am-10 pm	Triangle Garage	Newport Road	01430 424119
Builder and Joiner	Gav Lewis	2 Fairfield	07904 091038 / 01430 424479
Building Contractors	Greenwood and Ford	Low Road, Everthorpe	01430 423831
Canvas prints from your images	Tony Roach FineArtCave	Common Lane	01430 423063
Carpet & Hardfloor Cleaning	Excellence Floorcare (Mark)	23 Newport Road, North Cave	07919 103138
Chimney Sweep	Paul Dobson, Cross Solutions	17 Springfield Avenue, Brough	07961 708669
Chiropractor	Cave Chiro, Louise Marshman	Westcote Fold, S. Cave, HU15 2GU	01757 700500
Clinical hypnotherapist	Susan Dukes NIPCH	3 Westgate	01430 425450
Computer services repairs sales	Daniel's Laptops	Newport Road	01430 421014
Country Garden Florist	Mrs. A Gregory e-Florist	Gilberdyke	07977 780264 / 01430 441829
Creative exteriors and Fascias	Lee Garton	6 Westgate	01430 421268
Dog Grooming	Posh Paws	North Cave	01430 422605
Dog Grooming	Pampered Pooches	Westgate	07765 406238 / 01430 470027
Dog Grooming (mobile)	Doggie Style	3 Westfield Close Hotham	07834 225531
Driving School	North Cave School of Motoring	34 Beck Road, Everthorpe	01430 421944
Electrical Appliances	Steve Mews	Westgate, North Cave	07578 878007
Electrical Contractor	David Giles	Denmark Rise, North Cave	07778 644002 / 07825 092868
Electrical Goods - Repairs	Nigel Cundill	-	07962 467111
Electrician - Domestic	J B Electrical Services	38 Beck Road, Everthorpe HU15 2JH	07983 991316 / 01430 423291
Equestrian Bedding	T Harrison	21 Newport Road	01430 422560
Equestrian Outlet	Haggerstons	Newport Road	01430 626118
Estate Agents	Chris Clubleyard Co	Skillings Lane, Brough	01482 662211
Fish & Chip Shop & Mobile Van	The Catch	20A Westgate, North Cave	01430 424550
Funeral services	Hortons	The Old Police Box	01430 423031
Garden maintenance service	Pure Gardens (A Underwood)	-	07904 738196 / 01430 425211
GMP Garden Services	T Vessey-Baitson	35 Fairfield	07800 896679 / 01430 421937
Graphic design and illustration	Katy Potaty	www.katypotaty.co.uk	07919 046904 / 01430 423963
Graphic Design and Print	Kinroy Design	Canal Side West, Newport	07921 728235
Graphic Design and Print	Little Graphic Design Company	Beck Road, Everthorpe	01430 424317
Hair and Beauty	Butterflies Hair Boutique	21 Westgate, North Cave	01430 421000
Hairdressing + Beauty Therapist	Curlaway + Frances Spencer	1 Orchard View, Church Street	01430 423712
Improve health and fitness	Red Kite Fitness Nordic Walking	The Arches, Drewton Estate	07902 462387
Joiner	David Dennis	7 Church Street	07721 358453/01430 422332
Joiner	Neville Dykes	14 Newport Road	01430 422977
Joiner	M J Morton	1 Westgate	01430 470990
Landscape & Property Maintenance	Turner & Wheel	39 Church St, North Cave	07939 427721 / 01430 235238
Landscape Architects (Chartered)	2B Landscape Consultancy Ltd	www.2bconsultancy.co.uk	01430 423204
Landscape Contractor	Humber Landscapes	8 Nordham	07715 522441 / 01430 470920
Livery yard, riding lessons	Sue Body	South Ings Lane	01430 422238
Logs (will deliver)	Brian Dalby	40 Newport Road	01430 422500
Nails and Beauty	Iconic Nails & Beauty	Low Lea, Main Road, Newport	07947546725
Newsagent, Post Office & Store	North Cave News	40 Church Street 6-8 daily 7-8 wk	01430 422363
Optician	J Tomlinson	Newbald	0800 9775994
Painter and Decorator	Andrew James	10 Blackthorn Close, Newport	07926 813281 / 01482 651952
Painter and Decorator	Craig Lane	24 Westgate	07825 325547 / 01430 440471

Business/Service	Name	Address	Telephone Number
Piano, Singing, Theory & Drama	Margaret Iveson, Teacher	Newport Road	07951144820 / 01430 422789
Plants, vegetables, eggs	Marjoram Nurseries	Low Road, Everthorpe	01430 424493
Play - Adventure	William's Den	Wold Hill, North Cave	01430 472230
Plumber	AWS Plumbing and Heating	23 Church Street	07886 026993 / 01430 470827
Plumber	G Greaves Plumbing & Heating	68 Main Road, Newport	01430 266130 / 07429 173175
Precision Engineers & Machinists	John Dunn Engineering	Cottage Farm Works, Breck Lane	01430 424957
Prison Printshop	Richard Johnson	HMP Humber	01430 426507
Pub and Restaurant	Hotham Arms	2 Main Street, Hotham	01430 422939
Public House	The White Hart	20 Westgate, North Cave	01430 470940
Reflexology/Reiki/Foot care	Walking on Air Therapies	2 Littlemoor Close, North Cave	07789 595492
Restaurant / Café	William's Den	Wold Hill, North Cave	01430 472230
Sand and Gravel	Breedon, North Cave Quarry	The Quarry, Newport Road	01430 421503
Singing	Marissa Steer, Teacher	22 Westgate, North Cave	07572 169215
Snacks and drinks, orders	The Little Butty Bus	North Cave Wetlands	07766 117316
Sports Massage	Contour Therapies	8 Denmark Rise	01430 470601
Tailoress for alterations etc.	Mrs Rosemary Cousins	7 Station Road, North Cave	01430 424397
Therapy training	www.inspiretherapytraining.com	Manor Road, North Cave	07917 097419
Timber Merchants and Logs	Geenix Sawmills	Crosslands Lane, North Cave	07544 861005
Tree/hedge cutting and decking	Andy Davey	1A Main Street, Hotham	07957 881298
Tree Surgery and Consultancy	East Yorkshire Tree Company	North Cave	01430 423966
Tree Surgery, Stump Grinding	Dan Minns Tree Surgeon	Beck Road, Everthorpe	01430 421688
Vegetable oil processor	Brocklesby Ltd.	Crossland Lane	01430 424900
Venue dressing	Something Borrowed	North Cave	07450 008224
Vintage Crockery,Cutlery & Crystal Hire	Take That & Tea Party - Olwyn Latham	The Owl House, 6 Milestone Court	07833 432539
Wedding Services	Style My Venue - Liz Ewing	10 Church Street, North Cave	07812 422007 / 01430 424115
Wildflowers and Plants	Mires Beck Nursery	Low Mill Lane, off Mires Lane	01430 421543
Wills Estate Administration	Swan Solicitors (David Rhodes)	Professional service in your home	01482 631864

Are you a business?

Would you like a free listing in the 'Local Businesses - Use them or lose them' table?

Contact: The Editor giving information, as shown above.

Advertising space - if you would like to advertise, please contact The Editor for rates and availability.

Village Link Contacts

Bill/Liz Blackledge

Editor/Typesetter/Webmaster

E-mail editor@villagelink.info

Telephone 01430 423204

Paul Morris

Delivery & Distribution

Telephone 07932 000558

Sarah

Contact/School

Telephone 01430 422551

Content for next issue (April - May) to us by 12 March please

NEVILLE DYKES

JOINER

NOW FITS uPVC WINDOWS,

FASCIAS AND SOFFITS

ALL TYPES OF WOODEN FENCING

Telephone: 01430 422977

**JB ELECTRICAL
CONTRACTORS**

Domestic & Commercial

01430 423291 / 07983 991316

info@jbselectrical.co.uk / www.jbselectrical.co.uk

Fully Qualified & Insured

No Job Too Big or Small

Free Estimates & No VAT

*New Installation/Full & Part Rewires
Consumer Unit Moves & Upgrades Extra
Sockets & lights inc. Security Fault
Finding & Repair Work*





Tomlinson Opticians are open again!
We look forward to welcoming patients old and new.

Don't be part of the crowd!
Trust the care of your eyes to a local independent practice, using the latest technology and a comprehensive hygiene regime to ensure your safety.



With a great range of frames and the most advanced lenses, you can be assured that you will see and look great!



**John
Tomlinson**

optician

The Best in Eyecare Since 1991

**Westfield House, The Mires
North Newbald, YO43 4SE**

Tel: 0800 977 5994

Book online at: www.tomlinsonopticians.co.uk