

# Village Link

The Newsletter of Hotham, Everthorpe and North Cave  
August - September 2022



See P12 & 13



*North Cave War Memorial dressed for the Platinum Jubilee  
by Barbara Young - Photo: Barbara Young*

# North Cave Preschool

Open: 8.00am - 5.00pm  
Term-time only  
From 20 months of age



[www.northcave-preschool.co.uk](http://www.northcave-preschool.co.uk)  
[northcavepreschool@hotmail.co.uk](mailto:northcavepreschool@hotmail.co.uk)  
07968 239303

We enjoyed our Jubilee celebrations in June and you might have noticed the Queen 'dropped in' for tea with James Bond outside the Village Hall!



This term we have been learning about life cycles of animals, flowers and butterflies, as well as making the most of the beautiful weather by playing outside in our garden space.

There will be a quiz hosted by Rev. Barry at the Village Hall to raise funds for Preschool on Friday 23rd September. Tickets are £5 per person and you can bring your own drink. Contact us on Facebook or by email from the beginning of September school term for tickets.

We want to wish our leavers good luck at their new schools and will be holding a party at South Cave Leisure Centre to send them off! There are limited spaces for under 2s in the new school year, so please get in touch with us asap to reserve a place.



The Parish Council has taken over the upkeep and maintenance of the **Defibrillator**, which is sited on the front of the **Village Hall**.

If you are unfortunate enough to need to use the machine: **ring 999** and wait for instructions. Keep doing CPR whilst you wait for the defib or the ambulance to arrive.

After use, please inform the clerk on 01430 423668, so that the pads can be replaced.

## Distribution Manager

Sadly, Paul (who has been the Village Link Distribution Manager for the past year) has had to move on to pastures new. The Village Link team would like to say a big **THANK YOU** to him for all his support and wish him every success in his new ventures. We hope to see him back again one day.

We are pleased to announce that Simon Plows, who some might know already as the Bell Captain at North Cave Church, has volunteered to take over the role and we look forward to welcoming him to the Team.

## Update for Summer 2022

### We won!

The first thing that we have to share with you is that the team, which helped to found both Slow The Flow in Calderdale and West Wolds Slow The Flow, was nominated for the national CIRIA SusDrain awards in July, for our work related to **Sustainable Drainage Systems (SuDS)** and **Natural Flood Management (NFM)** - and we won!

The team is, in effect, three-quarters of North Cave's very own 2B Landscape Consultancy: Bill, Elizabeth and Amanda. (see: [www.2bconsultancy.co.uk](http://www.2bconsultancy.co.uk))

We were kindly nominated as **Outstanding Team of SuDS Champions** by two ex-Yorkshire Water colleagues (one retired, one moved on to Severn-Trent Water) who believe in natural and landscape-based approaches to water management as much as we do. They have seen our very different work at WWSTF and in Calderdale (the latter has been running since 2016 and has been on BBC TV's Country File, as well as receiving the Queen's Award for Voluntary Service). Added to that, 2B has been promoting SuDS through our projects and webinars, and has been interviewed by OFWAT to discuss our experiences (not always great!) with Water Companies - and how they might do better.

We were up against stiff competition from the team at London Borough of Enfield, who have created some amazing projects. However, we were happy to see that Enfield won several awards at the same event for specific SuDS and NFM site-based projects.

All in all, we are delighted to have received national recognition of both of the 'Slow The Flow' projects, as well as our efforts to promote SuDS through our work.

Incidentally, as editors of Village Link we are well aware that this looks like blowing our own trumpets - and it is! But we are not shy, and neither should you be if you have something to shout about - *get in touch*.

### Agricultural Workshop

The workshop, as mentioned is the last issue, took place on 21st June. Unfortunately, we did not get enough confirmed attendees to justify the room hire cost at Drewton's, who were very understanding when we decided to move the event online. We suspect this lost us a few farmers and land agents who would rather have attended a live event. The good news is that everything was recorded. You can find the link from the homepage of the WWSTF website and there are informative video presentations and links on:

- **West Wolds Slow the Flow:** brief introduction and why we need to consider 'slowing the flow' as well as 'getting the water away';
- **Catchment Sensitive Farming:** and recently extended funding and support for farm improvements;
- **Humber Forest:** extensive funding and support for tree planting – it could not be easier!
- **Our Chalk Landscape:** underpinning everything in the Wolds: landscape, farming, water, biodiversity and economy;
- **Soil fertility and productivity:** How to sustainably improve them - particularly important in the face of recent drought and fertiliser prices;
- **Further discussion:** including Regenerative Farming, Carbon Storage and Credits, Roles of banks and food buyers in carbon audit.

We hope you will find the presentations interesting and helpful. Any comments – including differing opinions – are welcome!

As ever, if you would like to know more or be involved in any aspect - *get in touch*. In particular, we need help with social media and publicity - so if that is your thing, maybe you might like to volunteer a little time. We would love to hear from you.





# Sterling Partnership Ltd Financial Advisers

9 Flemingate, Beverley, HU17 0NP

## Professional and Friendly Financial Advice

- Savings & investments
- Personal Pensions & Annuities
- Tax Efficient Advice
- Life Assurance & Family Protection
- Existing portfolios reviewed
- Inheritance Tax Planning

**Daytime & Evening Appointments Available**

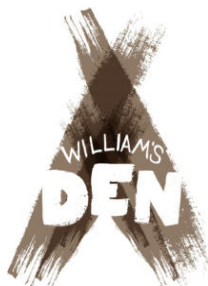
**Tel: 07738 120675**

**Email: [terry.ward@sterling-partnership.co.uk](mailto:terry.ward@sterling-partnership.co.uk)**

## William's Den

### William's Saturday Night Pizzeria

William's Den! is now open for pizza  
nights every Saturday 5-8pm  
throughout Spring and Summer!



Enjoy a night with family  
and friends in our  
restaurant or pop in for a  
take away

Best wishes,  
Christian and Tor Carver

**Contact us**

by email:  
[hello@williamsden.co.uk](mailto:hello@williamsden.co.uk)

or phone:  
01430 472230



Claire Kirby  
Walking on air  
therapies

Foot Health Practitioner

+ Reflexology + Reiki + Hopi Ear Candling + Indian Head Massage  
Mobile or Clinic in: The Old Estate Office, Fox Farm Complex  
Drewton Estate, Drewton, South Cave HU15 2AG

[www.walkingonairtherapies.co.uk](http://www.walkingonairtherapies.co.uk)

Email: [claire@walkingonairtherapies.co.uk](mailto:claire@walkingonairtherapies.co.uk)

Tel: 07789 595496



ASSOCIATION OF  
REFLEXOLOGISTS



Open for the sale of  
superb quality  
perennials, herbs and  
Yorkshire provenance  
wildflowers.

**Opening hours:**

March – September 10 till 4 every day

October – February 10 till 4 Mon-Fri

Low Mill Lane, North Cave

01430 421543

[www.miresbeck.co.uk](http://www.miresbeck.co.uk)



### Welcome!

Throughout the summer term, we have enjoyed welcoming our new starters and their families in to school for a series of transition events. In September, we will be welcoming 21 new starters and are pleased that numbers across the school are continuing to grow.

### Residential Visits

In the summer term, we were pleased to take our Class 1, Class 2 and Class 4 on residential visits. The children gain so much from these and they are an extremely important part of our curriculum offer. Our Class 4 enjoyed visiting Kingswood Dearne Valley whilst our youngest children in Reception, Year 1 and Year 2 visited Paxwold. We are looking forward to taking our Class 3 to Spiers Bank House in September after this was postponed in June.

### The X-Factory

As we approached the end of term, we were delighted to watch our Class 3 and Class 4 perform their summer production of 'The X-Factory'. The children performed their lines and songs extremely confidently and this was enjoyed by all that attended it. The proceeds from the tickets, along with donations from our Year 6 leavers' evening, will be donated to Yorkshire Air Ambulance.

### Library



After months of hard work, we were excited to open our new library in the last week of term. Formerly 'The Cave', the library has now been repainted, has new furniture and a number of new books that our children will love. We were delighted to welcome Nancy Smart, who retired from the school last year after 26 years, to open this for us.

We are extremely grateful to a number of people and groups for supporting us in this project. This includes the Friends of the School and South Cave Rotary for agreeing to make generous donations towards this project. We look forward to seeing the children in our local community benefit from this fantastic resource.





## The Parish of All Saints North Cave: with St. John's North Cliffe and St. Oswald Hotham

### CHURCH SERVICES

**All Saints Church North Cave:** 11.00am each Sunday

**St. John's Cliffe:** 9.15am on the 1st and 3rd Sundays

**St. Oswald, Hotham:** 9.00am on the 2nd and 4th Sundays

Rev. Barry Worsdale - Tel: 01430 470716

email: [bworsdale@hotmail.co.uk](mailto:bworsdale@hotmail.co.uk)

### Ukraine Refugees

A number of Ukrainian families have been able to be homed within our parish in recent months. We are grateful to those who have made space in their homes, in such times of need. If you think that you can assist in any way, no matter how small, please get in touch with Rev. Barry Worsdale on Tel. 470716 or email [bworsdale@hotmail.co.uk](mailto:bworsdale@hotmail.co.uk).

### THANK YOU to THE PLATINUM JUBILEE COMMITTEE

The Village Link team would like to thank The Platinum Jubilee Committee for kindly sponsoring this colour edition of the Village Link to enable the photographs of the event to be shared in full colour. We hope you enjoyed the celebrations and will enjoy this memorial edition.

## Belgrave Cottage

5 Talisker Walk  
The Bay - Filey

YO14 9GA

any questions  
07535 633818  
[belgravemusic@aol.com](mailto:belgravemusic@aol.com)

Situated on the beautiful East Coast at Filey  
Well equipped self catering cottage  
Sleeps 4 people (one double & one twin room)  
Lounge/Dining Room, Kitchen, Bathroom/Shower,  
two toilets, Patio

Bedding, Towels, Toiletries, all utilities & free  
superfast WiFi included

Complimentary Indoor Swimming pool, Sauna &  
Fitness Centre, Free Parking, 24 hour security &  
10% Restaurant/Pub discount

Other facilities include Cafe, Restaurant, Shop,  
Chemist, Archery, Table Tennis & Children's  
Activities

10 min walk to one of the 'Best Beaches in the  
United Kingdom'

Bookings taken for weekends/weeks/mid week/  
flexible dates

Spring - Summer - Autumn - Winter



Belgrave Cottage - for photos

"smell the sea and feel the sky.  
let your soul and spirit fly"

# North Cave Parish Council News

Greetings from North Cave Parish Council! We hope you are enjoying the Summer but please do take care during times when the temperatures are a bit excessive. We also hope that you are enjoying the flower baskets that have recently been put up along Westgate and Church Street. We are currently investigating the practicality of replacing them with Christmas decorations for the festive season.

## Queen's Jubilee Celebrations

The Queen's Jubilee gala went extremely well despite the weather and we had a great turn out of people to support it. Jackie North and her team organised the event so congratulations to all of them.

## Road Repairs

After a great deal of effort by the Parish Council, at long last ERYC appear to be going to do something about the condition of Eastfield and Station Road; all the holes etc. have been highlighted for repair. Let's hope they don't forget to come back and complete the work.

## New Councillor

We have recently been joined by a new Councillor, Simon Hubbard; we are sure you will join us in welcoming Simon to this role.

## Emergency Plan

We will shortly be going through the process of updating the village's Emergency Plan and would welcome suggestions and areas for inclusion from residents. If you do have any ideas that you would like us to consider, please let us know (contact details below).

## Other News

Our other news includes:

- The defibrillator for Everthorpe has been installed;
- The new signs for the Wallingfen Way at the Village Hall and by the Church have been ordered and should be installed during July.

## Contact

If you have any comments to bring to our notice, please contact our Parish Council Clerk:

MRS WARD – NORTH CAVE PARISH COUNCIL

Clerk & Proper Officer of the Council (RFO)

Tel: 01430 423668

Email: [clerknorthcavepc@hotmail.co.uk](mailto:clerknorthcavepc@hotmail.co.uk)

Hours: Tues / Wed 09:00-14:30 & Thurs 09:00-14:00 (Out of hours please email/leave a voicemail)

Please note the Clerk does try to maintain the hours stated above although her hours are flexible. If she's not available during the hours stated, she does have an answer machine service, and will contact you at her earliest convenience.

Our next meeting is planned for 16th August at 7pm in the Village Hall - we generally plan to meet on the third Tuesday of the month.

The minutes and agendas of each meeting will continue to be displayed in the notice board on the land adjacent to the Methodist Chapel on Westgate and also on the website:

[www.northcave-pc.gov.uk](http://www.northcave-pc.gov.uk).

Please note that the minutes of a meeting must be approved by the Parish Council before they are published so there will be some delay before they are made public.

## Flood Warden - Can You Help?

Due to a change in circumstances, the North Cave Flood Warden, Paul Morris, is no longer able to fulfil this role. Thank you Paul for your valued help in the past.

Consequently we are looking for someone to take on this role. The Flood Warden is the main point of contact for both the

Environment Agency and EYRC during time of flooding, as well liaising with residents and the emergency services.

If you are interested in this role, please contact the Parish Council Clerk (*details above*)

Tel: 01430 423668

# How you can help your child achieve their dreams ...

It is clear that the Covid pandemic has had a significant impact on children's learning and progress. Many children have fallen behind in their studies, especially in Maths and English. Consequently, many students may be feeling anxious about achieving their predicted grades in their forthcoming GCSE exams.

Many parents are concerned that their child is working below the expected level. While some have been able to provide home learning for their child, others have found it necessary to employ a private tutor. There are a number of online tuition agencies to choose from, where parents can contact individual tutors. However, some tutors may be unqualified and inexperienced in teaching which may be reflected in their low hourly rates.

We would advise parents to ask to see evidence of a tutor's teaching qualification, an up to date DBS check and proof of identity. A

high quality tutor will arrange a personal meeting and ask you to complete a Service Agreement form.

Despite the uncertain future created by the covid pandemic, it could be an opportunity for children to develop a growth mindset.

*'Being challenged in life is inevitable, being defeated is optional.'* Roger Crawford

Call us now to book a one hour assessment in English or Maths for your child.

**Tina Richmond BA PGCE**  
*Top Class Tuition*

*Head Office*

St Nicholas Parish Centre

148 Holme Church Lane

Beverley, HU17 0PY

T: 01482 872271

M: 07743254698

W: [www.topclasstuition.co.uk](http://www.topclasstuition.co.uk)

## Cave Players

Cave Players would like to thank everybody who came to support us in March at our 2022 Pantomime, Rumpelstiltskin. It was good to be back and wonderful to see so many people in our audiences again, even though we had to postpone from our normal January dates. It turned out to be more successful than we had dared to hope. Thanks must also go to many local business who so generously donated raffle prizes during the week. These were greatly appreciated.

Your donations towards our chosen charity, Butterflies (Memory Loss Support Group), was

very generous and meant we were able to raise £500 to help them in their work.

We are holding our Annual General Meeting on July 15<sup>th</sup> at the WI Hall in South Cave starting at 19:30. If you are interested please feel free to come along. If you can't make that but would like to join us for our next Pantomime then do come along to our auditions on September 30<sup>th</sup> again at the WI hall at 19:30. We look forward to welcoming some new members.

We look forward to you joining us at our next Pantomime at the end of January 2023.

### Humberside Police

#### Non emergencies use 101

Your neighbourhood Policing Team are available to offer advice on crime prevention and to listen and gather information on problems that you may be having in your area. If residents are unable to ring we are also able to visit your home for help and advice.

Please note that the Police can now issue dog-fouling tickets.

Many Thanks, Howden Policing Team



### Bennys Cottage

21A Nordham

North Cave HU15 2LT

[Cottages.com](http://Cottages.com)

2 Bedroom - one double bedroom and one single - semi-detached property sleeping 3 people. Great base for exploring the East coast and surrounding countryside.

Flexible arrival days, bookings taken for one night, weekend, midweek stays or longer. Free WiFi.

Contact: Simon 0787336348 or Sheryl 07848951730

[simsam77@tiscali.co.uk](mailto:simsam77@tiscali.co.uk)

[shez61164@yahoo.co.uk](mailto:shez61164@yahoo.co.uk)



# North Cave in Bloom



North Cave in Bloom members are very pleased with how brilliantly the red, white and blue plants have bloomed for the Queen's Platinum Jubilee year. We buy our plants locally from South Cave Plant Centre and Chris, the owner, never fails to supply us with excellent quality plants at reasonable prices. The weather has been very kind to us so far this summer, although we did have a particularly dry spell so our volunteers, who water our planters, certainly had their work cut out at the time, we are very grateful to them all.

Sadly, we had a rather disturbing incident in the spring, when the foxgloves and snowdrops we had planted in the Millennium Walk were stolen. Luckily, after an appeal via Facebook, we were able to replace them with foxglove seedlings from a resident's garden. On the positive side, we have had some very good news with local businesses including, Wolds Engineering Services, Christian Carver and Adams and Green Ltd (formerly Brockelsby's), generously donating funds to NCIB. Adams and Green would like us to use their donation towards a new wooden planter and we will use the other funding to purchase plants, equipment etc. as and when needed.

We have had many compliments about the wildflower bed at the bottom of Blossoms Lane. This small area is a continuing work in progress, trying to keep the invasive weeds down to allow seeds and new plants to flourish. The area on Station Road is well established now and has a wonderful show of poppies and other wildflowers.

The signs we made to keep people from parking their vehicles on the

grass verges in Nordham have been a great success in keeping the area clear.

Unfortunately, due to wear and tear and the ERYC grass cutters mowing them down they are not looking so good, so we have ordered new white ones to place at the back of the verges out of harm's way, hopefully.

We do enjoy our work in keeping the village blooming and hope it gives you pleasure too so if you have any comments, ideas, advice or would like to join our group to help us with planning or planting please ring Steve 01430 422709

Wishing You All a Blooming Good Summer.  
NCIB





**D3 Office Group**

**Print / Workwear / Office Interiors**

Hull: 01482 878737  
Leeds: 01977 681068  
Sales@d3office.co.uk

**Simon Tomlinson**  
Director

**SD TOMLINSON**  
Property Services

M: 07954 990203  
E: stdpropertieservices@btinternet.com

Property Maintenance  
Refurbishments  
Kitchen Fitting  
New Build Projects  
External Hard Landscape

84 Westgate  
North Cave  
HU15 2NJ

Westgate  
North Cave  
HU15

07415094005

**Home cooked meats and cakes - All Day Breakfasts**  
**Telephone orders welcome call: 07415094005**

Well behaved dogs on leads welcome.

Wheelchair accessible - Indoor and Garden Seating  
High chair available - Card or Cash Payments

**Open: Monday to Friday 8.30 am until 3.30 pm**  
**Saturdays 9am until 2pm : Sundays closed**

Camera Surveys available - Member of NACS  
Chimney Sweep from £40

**PAUL DOBSON**  
**Chimney Sweep**



**T: 07961 708 669**

17 Springfield  
Avenue, Brough

**NIGEL CUNDILL**  
**DOMESTIC APPLIANCE REPAIRS**

Prompt, Friendly Local  
Service & Advice  
30+ years Experience  
Washers, Dryers,  
Cookers  
Dyson Servicing, etc.

**Call Nigel**

**07962 467111 - ncrs@live.com**

**A. C. DAVEY FENCING**

All types of Agricultural &  
Garden Fencing

Gates Supplied & Fitted • Garden Clearance  
Hedges & Shrubs Cut • Tree & Hedge Planting

Call Andrew on: 07957 881298

E-mail: andrewdavey@email.com

My  Dream Home...

Has a cow and a chicken in the garden

Find YOUR dream home at  
**CLUBLEYS**

Charlotte  
Age 4



A huge thank you to everyone who joined in and created a

scarecrow for our Royal Scarecrow Festival in June. We know that they made lots of people smile as they walked around the village. Here are the photos of the winners:



Congratulations!

Thank you to 2B Landscape Consultancy and Mires Beck; William's Den; Morrisons in Brough; and Tesco in Market Weighton, for donating the prizes enjoyed by our winners.

In the build-up to the jubilee, we had several craft evenings at which we created some of the jubilee bunting and decorations. These Tuesday evenings are open to everyone and will begin again in September. If you would like to join us to learn a new craft, share one with others or just come for a chat you will be more than welcome. Look out for details in the next Village Link.



In the next few months, we will be painting pottery, holding our AGM and learning all about chocolate making with Butterflies Chocolates. Hopefully there will be some tasting too!

Visitors are welcome to attend our meetings which are held on the first Thursday of every month. For more details please e-mail [northcavewi@eastyorkshirewi.org.uk](mailto:northcavewi@eastyorkshirewi.org.uk)



# THE QUEEN'S PLATINUM JUBILEE CELEBRATIONS 2022



Our day of celebrations commenced with a Songs of Praise Service in North Cave Parish Church followed by refreshments. Reverend Barry had quite a task deciding which songs to select from the huge list of songs suggested by our residents.

Following this, Bell Master (Simon Plows) organised North Cave Bell Ringers to ring a Quarter Peal. It was wonderful to hear this welcoming sound throughout our Village and beyond. How fortunate we are to have a team of bell ringers in our village.

At around 1pm celebrations commenced on North Cave Playing Fields. We were pleased to note only a very few stallholders cancelled due to the weather forecast. A firm favourite for our young residents are the alpacas, but as thunder and lightning had been forecast, Natalie had to cancel for the welfare of her animals. Fortunately, Abi was a help at this time with her imaginative face



painting and had a long queue throughout the 4 hours. Splat the Rat was as cunning as ever. Hook a Duck and Ball in a Bucket were well attended - not only by youngsters but also adults having a go



too! Good to see that you are never too old to have some fun!

Kingston Swing Lindy Hop was a new addition to our event this year and you gave them a wonderful reception. Their music and dance routines were so entertaining. A small group of you even took part in a practice session. Will we be seeing you dancing for us next year?

It was pleasing to see so many returning and new stallholders at our event displaying their exceptional wide range of quality goods. The stalls looked so attractive and our visitors were certainly busy purchasing and placing orders too. The Choc & Cheese returned to us again this year and this year sold all their stock! Another favourite stall was the Tombola which awarded 300 prizes in just over one hour - well done Joyce. One of our new stallholders, Bryony (who is going on to study Fine Art at University) brought a small selection of her drawings and as a result of this she received several commissions - many congratulations Bryony and we wish you every success for the future. We were advised to cancel the "Mini Olympics" due to the wet conditions as these could have caused competitors to slip and suffer an injury.



The hat competition was quite well supported and it was interesting to see not only the range of designs but the ages of the competitors. One of





the two winners was Dora Taylor (who will be 100 later this year!!) and the other winner was Francesca Hill (Age 8) showing a very pretty hat. The winners were presented with their prizes by our new Parish Clerk, Mrs Ward.



We all thoroughly enjoy listening to Roger's Ceilidh Band and this year was no exception. It was unfortunate the weather conditions stopped us



being able to join in and dance to their music. Nevertheless it did not stop us tapping our feet and enjoying their performance.

There is a huge amount of preparation work involved in putting together these events and it would be impossible without the help and support of the staff of North Cave Playing Field Association, Wolds Engineering Co Ltd, North Cave Parish Council, ERYC, and Reverend Barry's Quiz Night. Please accept our grateful thanks.

We also send a huge thank you to all North Cave residents, visitors and stallholders for braving the rather damp "British" weather and supporting the Queen's Platinum Jubilee Celebrations on 5th June 2022 without all your support these events would not take place.



## THANK YOU

The Queen's Platinum Jubilee Committee



# Everthorpe

On the afternoon of Saturday 25th June the residents of Everthorpe celebrated the arrival of their defibrillator which was installed recently thanks to the generosity of North Cave Parish Council. The arrival of the defibrillator was marked with a celebratory

glass of prosecco and the unit was unveiled by Chair of the Everthorpe Forum, Elizabeth Ullrich, and Geoff Pile, Chair of North Cave Parish Council. Thanks too to the Nicholson family, as the defibrillator is mounted on their farm building on Low Road.



## Puffins Galore!

Everthorpe resident, book dealer and puffin sponsor Alex Alec-Smith (left) and artist Jemma Brown pose with Winnie, one of the forty two artist-decorated sculptures that can be seen right along the coast from Bempton to Spurn Point, with a cheeky few migrating inland to Hull, Beverley and Cottingham.

Phillip Larkin, J. R. R. Tolkien and Ted Hughes for example - and places associated with them in Holderness.

For more information about the puffins and where they all are until the end of October, visit [www.puffinsgalore.co.uk](http://www.puffinsgalore.co.uk).

Alex's puffin is at St. Patrick's Green, Patrington, HU12 0RA and is painted to represent writers with an East Yorkshire connection - Winifred Holtby, Andrew Marvell,





# North Cave Wetlands Big Weekend – Is a Hundred Possible?

For over ten years your local nature reserve has had a “Big Weekend” during which we try to record as many different bird species as possible. For the last few years we have combined it with the Global Big Day, a 24 hour period in which birders around the globe make a concerted effort to count as many different birds as possible. Like all good weekends we make it a three day one. The number of species we get is affected by a few factors, the main of which is the weather. In May, birders in our part of the world pray for easterlies preferably with some light rain showers, in 2022 it was forecast to be dry with a mainly westerly air flow. So that was definitely not in our favour but things that were to our advantage were 1) the number of observers, the reserve is more popular than ever with visitors, many of whom are interested in birds and 2) habitat, the reserve continues to expand and now includes more and more diverse habitat than ever. Over the years, our counts have ranged from disappointing totals in the mid-seventies up to twice recently when we had reached the dizzy heights of 96, leading us to wonder if 100 could be possible. This would be a remarkable total for an inland reserve in our part of the world. The other thing that has changed and proved to be a game changer is social media, we have a Facebook group – YWT North Cave Wetlands. We used this to publicise the event and attract more people to take part and as it turned out they were able to use it to alert us to birds that would undoubtedly have been missed in previous years.

So we were all set and ready to go on Friday 13 May – some people had taken a day's leave to spend the day at the reserve and observers were on site before 5 am. I wish that I could say that they enjoyed a bird-fest. In truth, in the absence of favourable weather conditions it was hard going! But everyone stuck at it and worked hard to record a

Egyptian Goose: Barry Jones

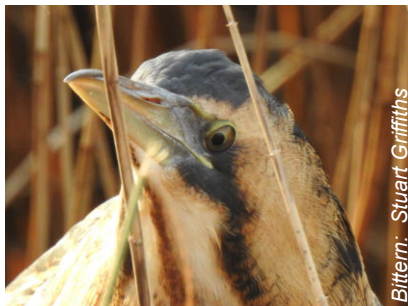


respectable 85 species by the end of the day. Nothing really unusual was seen or heard, though a pair of Egyptian Geese did the decent thing and hung around a Whimbrel proved to be a really useful spot. Whimbrels are waders, birds attracted to wetlands like ours, to get a good total at our reserve we really do need passage waders on their way to their breeding grounds in the north to drop in.

The problem on the Saturday was the weather

forecast showed little change and we struggled to think what new birds we might expect to see. The good news was an increase in observers would help. The day started better than might have been expected when a Wheatear was found – this is a passage migrant on the reserve and definitely not guaranteed. Then someone saw a Cuckoo – years ago this would have been expected but is now much scarcer and so was a nice addition. Then the extra visitor/social media bonus kicked in when someone posted that there was a Bittern on the Reedbed Lake! Bitterns are increasing species in the UK, though still very scarce, we get a few in the Winter at NCW, but had never recorded one in May – this was a real boost and to make it even better it did a big lap of the reserve allowing many to see it. These unexpected species along with a lot of hard work from observers meant that at the end of day two we had reached a really impressive 96 and equalled our best ever record. But where would the extra species come from? There were still a couple of relatively common birds that we might have hoped for but after two days of hard searching they did not appear to be around. We really needed a change in the weather. What would the last day bring?

Thank goodness - although light and with very little precipitation, the wind direction did switch to coming from the east on the Sunday. This was all that was needed to drop in a few Sanderling. More waders on their way to breed in the Arctic. They are rare inland, so this a great addition. Then someone saw a Hobby, we might have expected to see one of these elegant falcons by now, but they are never guaranteed. Then a Greenshank was heard giving its distinctive call – we had hit new heights and were on 99 - absolutely amazing but would we fall just short of the century? No, as it turned out, but the momentous milestone was achieved in an inauspicious way when someone casually mentioned that they had seen and photographed two Canada Geese on Saturday, a common bird but we do get them at our reserve at this time of year. Nonetheless we had done it! Thanks go to everyone who joined in to achieve this great total. If you want to join in next year or just want to know what is going on down at your reserve please have a look at our Facebook group or even better pop down and chat to one of the friendly regulars on the site. What is the next year's target? 105 anyone?



Bittern: Stuart Griffiths

# The White Hart Inn

New managers Sam and Sharon McKnight welcome you back to your cosy village pub.

Come in and try one of our great choice of local cask ales as well as our fabulous range of classic beers, wines and spirits 7 days a week!

As well as this - we have a range of weekly and monthly events, including live acoustic music on the last Saturday of every month and a singer once a month.

We look forward to seeing you.

## Opening times:

Monday - Saturday 4pm-11pm

Sunday 12pm-10.30pm

## Weekly events:

Wednesday 7.30pm Poker night

Thursday 8pm Quiz night

Saturday 6 - 9pm Themed food

Sunday 12 - 5pm Carvery

For updates see Facebook @thewhitehartinn1

## NORTH CAVE INDOOR BOWLING CLUB

Would you like to come and try Indoor Bowls?  
Gentle exercise in a warm, friendly, environment?  
Open every day from 10:30a.m.

Call and have a cup of coffee - see what it's all about  
Townend Lane, North Cave, HU15 2LZ

Call: 01430 421378 - Email: [eileen\\_hebden@verizon.net](mailto:eileen_hebden@verizon.net)

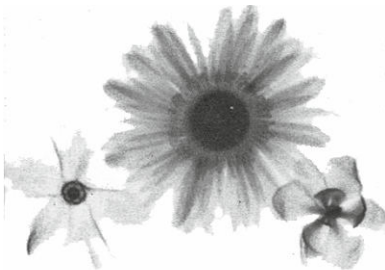
[www.northcavebowls.co.uk](http://www.northcavebowls.co.uk)



## Curlaway

Unisex Hair & Beauty Salon

1 Orchard View, Church Street  
North Cave



**01430 423712**

**Incorporating**  
Beauty and Feet Therapist - Alla  
"A Beauty Lounge"

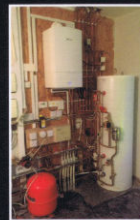
## G. GREAVES PLUMBING & HEATING

Tel: 01430 266 130

Mob: 07429 173 175

email:  
[gavdaplumber@hotmail.co.uk](mailto:gavdaplumber@hotmail.co.uk)

68 MAIN ROAD  
NEWPORT  
BROUGH  
HU15 2PP



**Specialist**  
**Heating Systems**

- Kitchen & Bathroom Installations
- Central Heating Systems
- Boiler Breakdowns



- Annual Service and Landlord Safety Inspections & Repairs
- No Call Out Charges
- Free Quotes



# Think Global, Act Local?

So, did we enjoy the near 40° heat we experienced in July? If we did, will we enjoy it much more frequently in the years and decades to come?

Did we pick up that, as well as the heatwaves and fires raging across southern Europe (and the rest of the world), London Fire Brigade declared the heatwave their busiest time since the Blitz in WW2? And did we note the fires taking out crops and houses across the UK? Can we imagine a time in which we might look back fondly to the summer of 2022 and think it was lovely - *only one* 39° heatwave - and *only* 39°?

Well, that is not many years away. 2050 will look very different - and very much worse - than 2022. I can't take much solace in the fact that I will be in my 90's in 2050 - it will not be a good time to be old.

But actually, it is our children, grandchildren and great-grandchildren who will have to deal with our, and previous generation's, failures - 2100 is looking like a science-fiction apocalypse - but it is within their lifetime. Air-con won't solve the problem - it only guzzles energy and makes the decline faster.

It is odd that, in the face of such an alarming future, the greatest concern of the day is which man or woman will be the next Prime Minister, especially when both contenders have such a dismal record on the environment. They are both concerned with 'growth' on a finite and increasingly constrained set of resources - which are the very drivers of the climate and biodiversity catastrophe unfolding before us. This is not a political statement, it is a factual one. That the people vying to take responsibility for our nation fail to recognise the the greatest possible emergency - which is in the news on a daily basis - beggars belief.

Locally, we hear of alarming instances of people either cutting down trees or wanting to cut down trees. Let's deal with one thing. If you want impartial advice about tree health, don't ask a man with a

chainsaw in his hand - ask an independent aboricultural consultant.

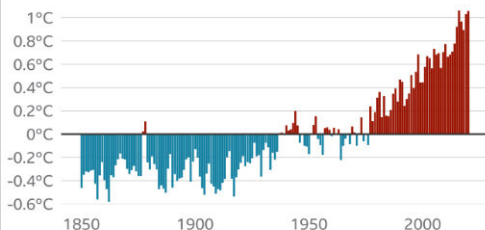
Trees are one of very few tools we have to help reduce the impacts of climate change. As well as providing the obvious shade and wildlife benefits, they actively cool the environment, reduce flooding, and improve air and water quality. You may have noted the report that greener parts of towns and villages can be up to 5° cooler than built-up areas (Google: [BBC Life in Britain's hottest neighbourhoods](#)). Now that is air-con, and for free. It is easy for us privileged village-dwellers to take our lovely environment for granted, but don't: it only takes someone with a chainsaw and an hour, to undo the benefit of 100 years' or more growth and carbon-capture.

And when it comes to planning anything, from a garden, a drive, public spaces, extensions, to housing and other developments - we all need to be thinking seriously about climate change and the biodiversity crisis. Every little decision counts for the future. It won't be long before people trying to go on holiday to Mauritius, or skiing in February, look a bit foolish because the islands are submerged, the snow has all gone and nothing can take off because the runways are too hot or flooded. And we may look back at what we did, or did not do, in 2022, and think about how it made a difference, for better or worse.

*Bill Blackledge*

## The world is getting warmer

Annual mean land and ocean temperature above or below average, 1850 to 2020



Note: Average calculated from 1951 to 1980 data

Source: University of California Berkeley

BBC

# Directory Of Organisations And Events

**CATHOLIC CHURCH:** Our Lady of Perpetual Help, Sancton Road, Market Weighton. Mass Saturday 5.30 pm & Sunday 10.30 am. Holy Day Mass 7.00 pm. Weekdays Mass as announced. Fr. David Standen tel. 01430 873202 or email [stmarystjohn@rcdmidd.org.uk](mailto:stmarystjohn@rcdmidd.org.uk) website: [www.stmarystjohn.org.uk](http://www.stmarystjohn.org.uk)

**CHURCH OF ENGLAND - ALL SAINTS NORTH CAVE, ST. OSWALD HOTHAM, ST JOHNS NORTH CLIFF:** Contact details for Priest in Charge: The Rev. Barry Worsdale, The Vicarage, Church Lane, North Cave HU15 2GJ Tel: 01430 470716 email: [bworsdale@hotmail.co.uk](mailto:bworsdale@hotmail.co.uk)

**NORTH CAVE WOMEN'S INSTITUTE:** meets in the Village Hall on the **FIRST** Thursday of each month at 7.30pm. There is a varied programme of speakers, demonstrations etc attended by approx. 30 members. A warm welcome is offered to any ladies who would like to join. For information contact Barbara Young on 01430 423608 or email [northcavewi@eastyorkshirewi.org.uk](mailto:northcavewi@eastyorkshirewi.org.uk)

**EAST RIDING CHILDREN'S CENTRE:** Monday 9.00am until 3.30pm, Tuesday 9.00am until 5.00pm and Wednesday 9.00am until 2.30pm. For more information and to register, call Lisa Howell (family support worker) on 01482 669474

**NORTH CAVE PRE-SCHOOL: VILLAGE HALL:** Open Monday - Friday (term time) 9.00am - 3.00pm plus 'lunch clubs' and 'rising fives' sessions. From age 2½. Contact: Julie Tooke, tel. 01430 441547 / 07968 239303

**NORTH CAVE VILLAGE HALL:** Westgate, available for all kinds of functions. All enquiries to the Booking Secretaries: Eva Dayes 01430 423111 or Maggie Whitlock 01430 424023.

**HOTHAM VILLAGE HALL:** Newly refurbished with excellent facilities - available for all kinds of functions. All enquiries to the Booking Clerk Mrs. Pam Johnson, tel. 01430 425285; or Freda Brocklesby, tel. 01430 421095 email: [brocklesby678@btinternet.com](mailto:brocklesby678@btinternet.com)

**NORTH CAVE PLAYING FIELDS ASSOCIATION:** (includes the Play Area). Registered Charity No 523277. Contact Hon. Sec. John Backhouse. e-mail [john.backhouse1@googlemail.com](mailto:john.backhouse1@googlemail.com)

**NORTH CAVE SPORTS AND SOCIAL CLUB:** The Pavilion, The Playing Fields, North Cave. Small friendly club, annual membership £5, all profits go to the Playing Fields/Play Area. Contact Hon. Sec. John Backhouse. e-mail [john.backhouse1@googlemail.com](mailto:john.backhouse1@googlemail.com)

**NORTH CAVE FOOTBALL CLUB:** Two adult football teams, new players welcome. Contact Hon. Sec. John Hewson, tel. 01430 422283

**NORTH CAVE CRICKET CLUB:** Two teams playing on Saturday afternoons and Tuesday evenings. New members (especially juniors) welcome. Practice evenings Thursday nights during the season. Contact Hon. Sec. Craig Hewson, tel. 01430 422909

**EAST YORKSHIRE CANOE CLUB:** Sessions every Saturday morning, South Ings Lane, Newport Road, North Cave. Beginners welcome. Contact Charles McCaffrey Tel. 01482 867754 or 07813042417 or [info@eycc.org](mailto:info@eycc.org) For more information see the website: [www.eycc.org](http://www.eycc.org)

**NORTH CAVE INDOOR BOWLS:** Townend Lane, North Cave, tel. 01430 421378. Open 10.30am to 10.30pm in Winter, from early September until the end of April.

**CAVE PLAYERS:** Amateur Drama Group. Rehearsals take place in South Cave at the WI Hall and performances take place in North Cave at the Village Hall. For information contact chair, Sharon 01482 840404 or sec. Neil, 01430 424497. For tickets, contact Malcolm 01430 422073 or visit [www.caveplayers.co.uk](http://www.caveplayers.co.uk)

**DENTIST:** Church Street, South Cave. Weekdays 9am to 6pm. Saturdays 9.15am to 12 noon. By appointment, tel. 01430 423826

**OPTICIAN:** John Tomlinson based in North Newbald. Tel. 0800 9775994

**SOUTH CAVE SCOUTS:** Beavers: 6-8s, Cubs: 8-10½s, Scouts: 10½-14s, Explorer Scouts: 14-18s. If To add a name to the Group's waiting list email: [southcavescoutingmembership@gmail.com](mailto:southcavescoutingmembership@gmail.com). Anyone with a general enquiry should contact Claire Moverley, Assistant Group Scout Leader on 07803247324.

**RAINBOWS, BROWNIES AND GUIDES:** 01430 421504 or <https://www.girlguiding.org.uk>

**EAST RIDING CARERS' SUPPORT SERVICE:** tel. 0800 9176844

**MEDIBUS:** Door to door service to Beverley, Cottingham, Hull Royal, Goole and Scunthorpe Hospitals from your front door. tel. 03456 445959 (charged at local rate).

#### **DOCTORS' SURGERIES:**

##### **South Cave:**

Emergencies and Enquiries	424764
Appointments	422206
Repeat prescriptions	422495

##### **Gilberdyke:**

Emergencies and Enquiries	440225
Appointments	440225
Repeat prescriptions	440225

**MOBILE LIBRARY:** Any queries, tel. 01482 392749 or check on line: [www.eastridinglibraries.co.uk](http://www.eastridinglibraries.co.uk)

**North Cave:** Wednesday - *every four weeks from 9th December 2020*

Outside No. 30 Newport Road - 10.05am- 10.20am

**POST OFFICE:** At Londis Cave News, Church Street, Weekdays 6am - 8pm, Weekends 7am - 8pm

**POLICE:** For non-emergency calls contact your Local Policing Team, tel. 101 (24-7), or e-mail

##### **Police Community Support Officers:**

PS David Lonsdale email [david.lonsdale@humberside.pnn.police.uk](mailto:david.lonsdale@humberside.pnn.police.uk)

PC Jack Dominic email [jack.dominic@humberside.pnn.police.uk](mailto:jack.dominic@humberside.pnn.police.uk)

PCSO Anthony Mell email [anthony.mell@humberside.pnn.police.uk](mailto:anthony.mell@humberside.pnn.police.uk)

**BELL-RINGING:** Join us at All Saints' church on practice night Tuesdays from 7:30-9pm or before Sunday morning service from 10:30-11, or contact Bill on 470868 for more details.

#### **ANTI-SOCIAL BEHAVIOUR:** (Environmental Services)

Noise etc. S Shuttleworth, tel. 01482 396203, out of office hours tel. 01482 393939

#### **YOUR LOCAL COUNTY COUNCILLORS:**

Victoria Aitken (NCave) tel. 07721 411620 | Nigel Wilkinson (Eastrington) tel. 07717 364525

Linda Bayram (NCave) 07956 310720 [linda@cbayram.karoo.co.uk](mailto:linda@cbayram.karoo.co.uk)

**NORTH CAVE PARISH COUNCIL:** Contact the Parish Clerk in writing: Mrs Ward Tel: 01430 423668 Email: [clerknorthcavepc@hotmail.co.uk](mailto:clerknorthcavepc@hotmail.co.uk) Hours: Tues / Wed 09:00-14:30 & Thurs 09:00-14:00 (Out of hours please email/leave a voicemail)

**NORTH CAVE FLOOD WARDEN:** Vacancy - if you would like to volunteer, please contact the Clerk.

**CAVES U3A:** Speakers meetings at Cave Castle on the first Monday in the month at 2pm except on Bank holidays when it is deferred for a week. Contact Sec. Bernice Maitland. Tel. 01430 421960

# Local Businesses - Use them or lose them

Business/Service	Name	Address	Telephone Number
Accommodation for visitors	Nordham Cottages	9 and 11 Nordham, North Cave	07951 745033 / 01430 422266
Accommodation for visitors	Belgrave Cottage, Filey	Belgrave Farm, North Cave	07535 633818
Accommodation for visitors	Bennys Cottage	21A Nordham, North Cave	0787336348 / 07848951730
Accountancy	TaxAssist Accountants	12 Westgate, North Cave	01482 235363
Aerial / Satellite /lcd installations	Chris Chapman	Westgate, North Cave	07739 583300 / 01482 342944
Auctioneer and Valuers	Hawley Auctioneer and Valuers	Albion House, Westgate	01482 868193
Bespoke Tailor and Shirtmaker	Robert James	36 Main Street, Hotham	01430 425435
Boarding Cattery	The Cat's Cradle (Vicky Herd)	Cavewood Farm Common Lane	01430 425554
Boarding Cattery	The Mews Cattery	Market Weighton Road	01430 422605
Boarding Cattery	Evergreen (Sarah Page)	6 Station Road	01430 421975
BP Service Station 7am-10 pm	Triangle Garage	Newport Road	01430 424119
Builder and Joiner	Gav Lewis	2 Fairfield	07904 091038 / 01430 424479
Building Contractors	Greenwood and Ford	Low Road, Everthorpe	01430 423831
Canvas prints from your images	Tony Roach FineArtCave	Common Lane	01430 423063
Carpet & Hardfloor Cleaning	Excellence Floorcare (Mark)	23 Newport Road, North Cave	07919 103138
Childcare	Wildflowers childminder	North Cave	07903 870865
Chimney Sweep	Paul Dobson, Cross Solutions	17 Springfield Avenue, Brough	07961 708669
Chiropractor	Cave Chiro, Louise Marshman	Westcote Fold, S. Cave, HU15 2GU	01757 700500
Clinical hypnotherapist	Susan Dukes NIPCH	3 Westgate	01430 425450
Computer services repairs sales	Daniel's Laptops	Newport Road	01430 421014
Country Garden Florist	Mrs. A Gregory e-Florist	Gilberdyke	07977 780264 / 01430 441829
Creative exteriors and Fascias	Lee Garton	6 Westgate	01430 421268
Dog Grooming	Posh Paws	North Cave	01430 422605
Dog Grooming	Pampered Pooches	Westgate	07765 406238 / 01430 470027
Dog Grooming (mobile)	Doggie Style	3 Westfield Close Hotham	07834 225531
Driving School	North Cave School of Motoring	34 Beck Road, Everthorpe	01430 421944
Electrical Appliances	Steve Mews	Westgate, North Cave	07578 878007
Electrical Contractor	David Giles	Denmark Rise, North Cave	07778 644002 / 07825 092868
Electrical Goods - Repairs	Nigel Cundill	.	07962 467111
Electrician - Domestic	J B Electrical Services	38 Beck Road, Everthorpe HU15 2JH	07983 991316 / 01430 423291
Equestrian Bedding	T Harrison	21 Newport Road	01430 422560
Equestrian Outlet	Haggerstons	Newport Road	01430 626118
Estate Agents	Chris Clubleyard Co	Skillings Lane, Brough	01482 662211
Fish & Chip Shop & Mobile Van	The Catch	20A Westgate, North Cave	01430 424550
Funeral services	Hortons	The Old Police Box	01430 423031
Garden maintenance service	Pure Gardens (A Underwood)	.	07904 738196 / 01430 425211
Gardening, patios, landscape, fencing	ROS Solutions, Matthew Stubbins	Main Street, Hotham	07854 493175
GMP Garden Services	T Vessey-Baitson	35 Fairfield	07800 896679 / 01430 421937
Graphic design and illustration	Katy Potaty	<a href="http://www.katypotaty.co.uk">www.katypotaty.co.uk</a>	07919 046904 / 01430 423963
Graphic Design and Print	Kinroy Design	Canal Side West, Newport	07921 728235
Graphic Design and Print	Little Graphic Design Company	Beck Road, Everthorpe	01430 424317
Hair and Beauty	Butterflies Hair Boutique	21 Westgate, North Cave	01430 421000
Hairdressing + Beauty Therapist	Curlaway + Frances Spencer	1 Orchard View, Church Street	01430 423712
Improve health and fitness	Red Kite Fitness Nordic Walking	The Arches, Drewton Estate	07902 462387
Joiner	David Dennis	7 Church Street	07721 358453/01430 422332
Joiner	Neville Dykes	14 Newport Road	01430 422977
Joiner	M J Morton	1 Westgate	01430 470990
Landscape & Property Maintenance	Turner & Wheel	39 Church St, North Cave	07939 427721 / 01430 235238
Landscape Architects (Chartered)	2B Landscape Consultancy Ltd	<a href="http://www.2bconsultancy.co.uk">www.2bconsultancy.co.uk</a>	01430 423204
Landscape Contractor	Humber Landscapes	8 Nordham	07715 522441 / 01430 470920
Livery yard, riding lessons	Sue Body	South Ings Lane	01430 422238
Logs (will deliver)	Brian Dalby	40 Newport Road	01430 422500
Nails and Beauty	Iconic Nails & Beauty	Low Lea, Main Road, Newport	07947546725
Newsagent, Post Office & Store	North Cave News	40 Church Street 6-8 daily 7-8 wkld	01430 422363
Optician	J Tomlinson	Newbald	0800 9775994
Painter and Decorator	Andrew James	10 Blackthorn Close, Newport	07926 813281 / 01482 651952
Painter and Decorator	Craig Lane	24 Westgate	07825 325547 / 01430 440471



Business/Service	Name	Address	Telephone Number
Piano, Singing, Theory & Drama	Margaret Iveson, Teacher	Newport Road	07951144820 / 01430 422789
Plants, vegetables, eggs	Marjoram Nurseries	Low Road, Everthorpe	01430 424493
Play - Adventure	William's Den	Wold Hill, North Cave	01430 472230
Plumber	AWS Plumbing and Heating	23 Church Street	07886 026993 / 01430 470827
Plumber	G Greaves Plumbing & Heating	68 Main Road, Newport	01430 266130 / 07429 173175
Precision Engineers & Machinists	John Dunn Engineering	Cottage Farm Works, Breck Lane	01430 424957
Prison Printshop	Richard Johnson	HMP Humber	01430 426507
Property Maintenance	Simon Tomlinson	84 Westgate, North Cave	07954 990203
Pub and Restaurant	Hotham Arms	2 Main Street, Hotham	01430 422939
Public House	The White Hart	20 Westgate, North Cave	01430 470940
Reflexology/Reiki/Foot care	Walking on Air Therapies	2 Littlemoor Close, North Cave	07789 595492
Restaurant / Café	William's Den	Wold Hill, North Cave	01430 472230
Sand and Gravel	Breedon, North Cave Quarry	The Quarry, Newport Road	01430 421503
Singing	Marissa Steer, Teacher	22 Westgate, North Cave	07572 169215
Snacks and drinks, orders	The Little Butty Bus	North Cave Wetlands	07766 117316
Sports Massage	Contour Therapies	8 Denmark Rise	01430 470601
Tailoress for alterations etc.	Mrs Rosemary Cousins	7 Station Road, North Cave	01430 424397
Therapy training	<a href="http://www.inspiretherapytraining.com">www.inspiretherapytraining.com</a>	Manor Road, North Cave	07917 097419
Timber Merchants and Logs	Geenix Sawmills	Crosslands Lane, North Cave	07544 861005
Tree/hedge cutting and decking	Andy Davey	1A Main Street, Hotham	07957 881298
Tree Surgery and Consultancy	East Yorkshire Tree Company	North Cave	01430 423966
Tree Surgery, Stump Grinding	D R Minns Tree Surgery	Beck Road, Everthorpe	07449 002674
Vegetable oil processor	Brocklesby Ltd.	Crossland Lane	01430 424900
Venue dressing	Something Borrowed	North Cave	07450 008224
Vintage Crockery, Cutlery & Crystal Hire	Take That & Tea Party - Olwyn Latham	The Owl House, 6 Milestone Court	07833 432539
Wedding Services	Style My Venue - Liz Ewing	10 Church Street, North Cave	07812 422007 / 01430 424115
Wildflowers and Plants	Mires Beck Nursery	Low Mill Lane, off Mires Lane	01430 421543
Wills Estate Administration	Swan Solicitors (David Rhodes)	Professional service in your home	01482 631864

#### Are you a business?

Would you like a free listing in the 'Local Businesses - Use them or lose them' table?

Contact: The Editor giving information, as shown above.

Advertising space - if you would like to advertise, please contact The Editor for rates and availability.

#### Village Link Contacts

*Bill/Liz Blackledge*

*Editor/Typesetter/Webmaster*

*E-mail [editor@villagelink.info](mailto:editor@villagelink.info)*

*Telephone 01430 423204*

*Simon Plows*

*Delivery & Distribution*

*Telephone 07841 052219*

*Sarah*

*Contact/School*

*Telephone 01430 422551*

**Content for next issue ( Oct - Nov) to us by 12 Sept please**

**NEVILLE DYKES**

**JOINER**

**NOW FITS uPVC WINDOWS,**

**FASCIAS AND SOFFITS**

**ALL TYPES OF WOODEN FENCING**

**Telephone: 01430 422977**

**JB ELECTRICAL  
CONTRACTORS**

**Domestic & Commercial**

**01430 423291 / 07983 991316**

**[info@jbselectrical.co.uk](mailto:info@jbselectrical.co.uk) / [www.jbselectrical.co.uk](http://www.jbselectrical.co.uk)**

**Fully Qualified & Insured**

**No Job Too Big or Small**

**Free Estimates & No VAT**

*New Installation/Full & Part Rewires  
Consumer Unit Moves & Upgrades Extra  
Sockets & lights inc. Security Fault  
Finding & Repair Work*





- A TRANQUIL, PICTURESQUE SETTING
- CATS ONLY, NO DOGS BOARDED
- EXTRA LARGE HEATED CHALETs WITH STUNNING VIEWS
- FAMILY RUN BY FAB TRAINED HUSBAND AND WIFE TEAM



**01430 421975**

[www.evergreencattery.co.uk](http://www.evergreencattery.co.uk)  
 email: [cats@evergreencattery.co.uk](mailto:cats@evergreencattery.co.uk)  
 6 Station Road, North Cave, East Yorks, HU15 2LA

## Nordham Cottages

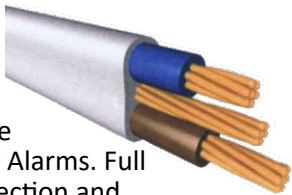
[www.nordhamcottages.co.uk](http://www.nordhamcottages.co.uk)

North Cave HU15 2LT

Bay Tree, Horseshoe & Baker's Cottage  
 4\* accredited, inter-connecting holiday cottages  
 1, & 3 bedroom cottages with 2 bathrooms Ideal  
 for 'Nearest & Dearest', friends or colleagues  
 Weddings, 'family gathering' & business stays  
 Reservations taken for w/e, mid-wk, wk & longer  
 Restored cottage-barn 'events space' for meetings  
 Contact: Louise Martin

01430 422266 or 07951745033  
[louisem200@hotmail.co.uk](mailto:louisem200@hotmail.co.uk)

# D.A. GILES (ELECTRICAL) LTD.



New builds,  
 Re-wires, Fire  
 and Intruder Alarms. Full  
 testing, inspection and  
 certification. New  
 consumer unit (fuse board). CCTV.  
 Large or small - we cover them all.  
 Free quotations:

**Tel: 01430 470842**  
**Mb: 07778 644002**  
**Mb: 07825 092868**



# ACCOUNTANCY SERVICES

Focus on what you do best and let us take care of the  
 distractions. We specialise in supporting small businesses  
 and can help with:

- Self Assessment Tax Returns
- Bookkeeping & VAT
- Business Accounts
- Payroll & RTI
- Corporation Tax
- ...and much more

We are based in Beverley and North Cave and cover  
 all surrounding areas. To arrange your free, no  
 obligation, meeting call us today on **01482 235363** or  
 visit us online at [www.taxassist.co.uk/beverley](http://www.taxassist.co.uk/beverley).



## Marjoram Nurseries

**01430 424493**

Woodside House, Low  
 Road, Everthorpe

**Hanging Baskets - Basket & Patio Plants**

**Bark Chippings - Multi Purpose Compost**

**BEDDING PLANTS - PALMS**

**Rockery Plants,**

**Perennials & Shrubs**

**Fresh Vegetables**

**British Hand Made Glazed Pots**



## HAWLEYS AUCTIONEERS & VALUERS

**Single items to full homes cleared Valuations given  
 for insurance,  
 probate and sale**

Albion House, Westgate, North Cave, HU15 2NJ Contact John or  
 Caroline Hawley - 01482 868193 Mobiles: John 07850 225805  
 Caroline 07980 624583

email: [info@hawleys.info](mailto:info@hawleys.info) [www.hawleys.info](http://www.hawleys.info)



# NEWS FROM MIRES BECK NURSERY



## Fundraisers

We are so grateful for the amount of people who have donated and created fundraisers for us this year, including Smailes Goldie, Jacqui and Ingrid, and Lloyds Bank. Jacqui and Ingrid raised a whopping £805 from their charity bike ride for us. Brandesburton Golf Club has made us their 'Charity of the Year 2022' and is currently raising much needed funds for us, so a huge thank you to them.

And thank you so much to everyone who has donated this year. We appreciate that everyone is financially struggling with everything going on in the world, and we want to say a massive thank you for supporting our nursery through it all

## Re-Opening of Day Services

From 24th March 2020 to 1st July 2022, we lived with the restrictions of a partial service offer due to ongoing COVID-19 restrictions. We are so happy that as of July 1st, day service restrictions are lifted and services are fully opened once again. Controls are still in place to limit any potential risk of COVID-19 transmission, but as much as possible, life as the nursery has returned to its usual fun and community.

## Offers

Our Facebook and Instagram pages are full of weekly offers off our plants. Come to our nursery to see all the beautiful colours we have! This is a great time of the year to plant perennials, as the great thing about our them is that they will grow and bloom every year just as beautifully colourful as they did the year before! We are open 7 days a week 10am-4pm.

## Mires Beck Cafe

At our Mires Beck Cafe, we serve light snacks (savoury and sweet), which are all made by Janet and her kitchen team. All fruit and vegetables that we use are from our Mr Tinklin Vegetable Garden, grown by Suzanne and some of our service users. The herbs that we use are also grown by Sandra and her service users in the Herb Team.

## Our New Pocklington Site

We have a brand new Mires Beck sister site in Pocklington (Wilberfoss). This is an extension for our trees and phragmites production, and so far, our Pocklington team have grown 150,000 trees and 25,000 phragmites.

## Recent Events

**Our Open Weekend** in June was very successful, when visitors enjoyed live entertainment, refreshments, children's games, and discounted plants. A big thank you to all who attended, and to staff and volunteers for giving their time.

**NGS Open Garden** – as members of the National Garden Scheme, we opened our gardens for charity on July 13<sup>th</sup>. It was a very enjoyable day keeping our retail and café staff extremely busy.

**Song Out For Ukraine** – On 8<sup>th</sup> July, Mires Beck joined Castaway for a musical performance in the heart of the nursery. Profits were shared with The Disasters Emergency Committee (DEC Ukraine Appeal).



# LOCAL EYECARE

## WITH THE EMPHASIS ON CARE

- THOROUGH EYE EXAMINATION
- CONTINUITY OF CARE
- GREAT CHOICE OF FRAMES
- IMPARTIAL ADVICE

BOOK ONLINE OR  
CALL FOR  
APPOINTMENT



John  
Tomlinson

**optician**

The Best in Eyecare Since 1991

**CALL FREE: 080 0 977 5994**

**[www.tomlinsonopticians.co.uk](http://www.tomlinsonopticians.co.uk)**

**Westfield House, North Newbald, YO43 4SE**

