

# Village Link

The Newsletter of Hotham, Everthorpe and North Cave  
October - November 2024



War Memorial in All Saints North Cave - Simon Plows



## Bennys Cottage

21A Nordham  
North Cave HU15 2LT  
[Cottages.com](http://Cottages.com)

2 Bedroom - one double bedroom and one single - semi-detached property sleeping 3 people. Great base for exploring the East coast and surrounding countryside.

Flexible arrival days, bookings taken for one night, weekend, midweek stays or longer. Free WiFi.

Contact: Simon 07877336348 or Sheryl 07848951730

[simsam777@tiscali.co.uk](mailto:simsam777@tiscali.co.uk)

[shez61164@yahoo.co.uk](mailto:shez61164@yahoo.co.uk)

## NIGEL CUNDILL

### DOMESTIC APPLIANCE REPAIRS

Prompt, Friendly Local  
Service & Advice

30+ years Experience

Washers, Dryers,

Cookers

Dyson Servicing, etc.

**Call Nigel**

**07962 467111 - [ncrs@live.com](mailto:ncrs@live.com)**



## Marjoram Nurseries

**01430 424493**

Woodside House, Low  
Road, Everthorpe

*Hanging Baskets - Basket & Patio Plants*

*Bark Chippings - Multi Purpose Compost*

**BEDDING PLANTS - PALMS**

*Rockery Plants,*

*Perennials & Shrubs*

*Fresh Vegetables*

*British Hand Made Glazed Pots*



\*\*\*CATTERY\*\*\*



- A TRANQUIL, PICTURESQUE SETTING
- CATS ONLY, NO DOGS BOARDED
- EXTRA LARGE HEATED CHALETs WITH STUNNING VIEWS
- FAMILY RUN BY FAB TRAINED HUSBAND AND WIFE TEAM

**01430 421975**

[www.evergreencattery.co.uk](http://www.evergreencattery.co.uk)

email: [cats@evergreencattery.co.uk](mailto:cats@evergreencattery.co.uk)

6 Station Road, North Cave, East Yorks, HU15 2LA

## BROUGH GARAGE DOORS

Repair - Service - Installation - Automation

*Door looking like this?*



*We can either repair it..*



*...or, replace it?*



**07718 955 307**



*Based in South Cave*



Specialist in all types of Garage Doors & Brands



Same day repairs available



Free 'No Obligation' Quotes



24/7 Emergency call out



New Door Installations



Automation of existing door



[www.broughgaragedoors.co.uk](http://www.broughgaragedoors.co.uk)



[info@broughgaragedoors.co.uk](mailto:info@broughgaragedoors.co.uk)

**Checkatrade.com**  
Where reputation matters



# **The Parish of All Saints North Cave: with St. John's North Cliffe and St. Oswald Hotham**

Revd. Barry Worsdale - Tel: 01430 470716

email: [bworsdale@hotmail.co.uk](mailto:bworsdale@hotmail.co.uk)

## **REGULAR CHURCH SERVICES**

### **All Saints Church North Cave:**

11.00am each Sunday

### **St. John's Cliffe:**

9.15am on the 1st and 3rd Sundays

### **St. Oswald, Hotham:**

9.00am on the 2nd and 4th Sundays

## **Men's Curry and Quiz Night**

**Last Friday**  
of every month  
in

**ZOOM Café, South Cave  
at 7.30pm**

All men are welcome.

Come and enjoy the fellowship and a  
bit of competition in a quiz. We  
usually make up teams of 3, 4 or 5  
depending on numbers.

Further details, please give me a call:

Revd. Barry Worsdale

01430 470716 or 07443 334391

## **ADDITIONAL CHURCH SERVICES**

### **All Saints Church North Cave:**

**October 13<sup>th</sup> 11.00am:**

Civic Harvest Festival

**November 10<sup>th</sup> 10.45 am:**

Remembrance Sunday Service at All Saints, followed by service at War Memorial.

### **St. John's Cliffe:**

October 5<sup>th</sup> 6pm: Harvest Festival.

### **St. Oswald, Hotham:**

October 13<sup>th</sup> 6.30pm: Harvest Festival St. Oswald, Hotham.

## **CONCERT - East Riding of Yorkshire Band**

**Saturday 9<sup>th</sup> November at 7pm**

**Tickets: £10**

**available at the church or contact Barry Worsdale -**

**Mb: 07443334391 or 01430 470716**



# Volunteers - aren't they amazing?

Further to the list of volunteers, published in the last edition, we have been reminded that there are a team of volunteers who help out at North Cave Wetlands on Thursdays between 10.00 and 12.00noon. We have been told: "We have about 15 regulars, who do a great job gardening paths etc around the

Reserve. And there are as many ladies as men supporting us." So, if you fancy joining in - don't be shy, get in touch with Tony Martin. The contacts for further information are:

Email: [tony.martin@ywt.org.uk](mailto:tony.martin@ywt.org.uk)

Tel: 07825 668420

## NORTH CAVE IN BLOOM



Once again, our bedding plants have been vibrant and colourful, brightening up the village throughout the summer months. There has been some confusion this year, as North Cave Parish Council paid for some stunning displays around the War Memorial area, which do complement ours. These include the large tubs beside the seats, the lamppost baskets and the ones on the large sign at the War Memorial and also Appleton Lane. NCIB are responsible for all the others around North Cave.

The last issue of the Village Link included a gracious appreciation by Elizabeth and Bill Blackledge of the work carried out around the village by many volunteers. At a recent meeting of NCIB it was unanimously decided to return the compliment and give Elizabeth and Bill a vote of thanks for their outstanding

contribution to the life and well-being of North Cave. Much of their work goes "under the radar" and they do not seek public accolades, but it should be recognised that the village as a whole would be much poorer without their efforts. Thank you, Elizabeth and Bill.

North Cave Bingo Gang have very kindly offered to hold a Bingo night in the Village Hall on 15<sup>th</sup> November raising funds for NCIB so if you have any suitable tombola prizes, we would be very grateful, contact details are below for collection or drop off. If anyone wants to join in the Bingo please contact Jill to book your seats on 07432 849406.

If you would like join our group or just to help with planting, our busiest time of the year is May when we prepare and plant up all the many planters around the village, so please get in touch by contacting Pauline 01430 424789, [phornsey217@phornsey217.karoo.co.uk](mailto:phornsey217@phornsey217.karoo.co.uk)





# LUKE'S BAKERY

■ YORKSHIRE BORN, YORKSHIRE BREAD ■



Luke's Bakery is celebrating a triple win at this year's Great Taste Awards as three of its sourdough loaves have been honoured

with gold stars by the Guild of Fine Food. The award-winning loaves - White, White & Rye, and Malted Granary Sourdough - were all recognised with stars, marking an outstanding debut year for the Yorkshire sourdough start-up in these national awards.

Founded in 2022 by Luke Jenneson from North Cave, Luke's Bakery has become popular with bread lovers across the region. From its headquarters in Brough, the team bakes thousands of sourdough loaves a week,

supplying shops, homes and hospitality businesses across Yorkshire and Lincolnshire.

Reflecting on the bakery's achievement, Luke's Bakery Founder and Director, Luke Jenneson, shared:



"It means a huge amount to receive not one, but three Great Taste Awards in our first year entering. We often hear from customers that our sourdough is the best they've tasted and being recognised in such prestigious national awards is a huge milestone.

"We take pride in slow-proving our dough for unbeatable flavour, bake for just the right amount of time and never take shortcuts on simple, honest, local ingredients.

"Thank you to the judges, the Guild of Fine Foods and of course my brilliant team at the bakery."

## All Saints, North Cave Bell Ringers

### A Teddy Bear Picnic

*for the whole family*

**Saturday 26th October 11am - 3pm**

at All Saints North Cave Church

Please **bring your own picnic** but

**tea, coffee, soft drinks & biscuits will be available.**

**Events will include:**

- **Teddy Bear Zip Wire** from our 65ft high tower. Bring your own teddy if you like. The winner will receive a certificate to mark your brave Teddy's achievements
- **Raffle**
- **Teddy bear hunt** around the church
- **Brass rubbings**
- **Name the teddy**

**For the adults**, try your hand at **Bell Ringing** and climb the tower to **see our bells**. There will be a **history trail** and more.

All funds raised will go towards our two new bells.



# BIRCH HOUSE BEAUTY

Finkle Street, North Cave

Nails

Waxing

Massage

Lashes

Brows

Evening and Weekend Appointments Available

Gift Vouchers Available

Facebook/Instagram - Birch House Beauty

Telephone - 07841052211

## Belgrave Cottage

5 Talisker Walk  
The Bay - Filey

YO14 9GA

any questions  
07535 633818  
belgravemusic@aol.com

Situated on the beautiful East Coast at Filey  
Well equipped self catering cottage  
Sleeps 4 people (one double & one twin room)  
Lounge/Dining Room, Kitchen, Bathroom/Shower,  
two toilets, Patio

Bedding, Towels, Toiletries, all utilities & free  
superfast WiFi included

Complimentary Indoor Swimming pool, Sauna &  
Fitness Centre, Free Parking, 24 hour security &  
10% Restaurant/Pub discount

Other facilities include Cafe, Restaurant, Shop,  
Chemist, Archery, Table Tennis & Children's  
Activities

10 min walk to one of the 'Best Beaches in the  
United Kingdom'

Bookings taken for weekends/weeks/mid week/  
flexible dates

Spring - Summer - Autumn - Winter

 Belgrave Cottage - for photos

"smell the sea and feel the sky.  
let your soul and spirit fly"

If you move to another part of the country or undergo a change of personal circumstance u3a can be a great way to get to know new people in an unpressured, social setting.

Caves u3a's aim is to provide interesting things for older people to do in their free time.

On Monday October 7<sup>th</sup> we will be entertained by the fantastically energising Thornton le Dale Ukelele band. Do come along to Cave Castle and hear them play, or grab a tambourine or maracas to join in the fun.

On November 4<sup>th</sup> Mike Ryder will talk to us about women's lives in 17<sup>th</sup> century Hull.

On December 2<sup>nd</sup> we have our Christmas lunch at Cave Castle.

All of these events are in addition to our regular Interest Group meetings including French Conversation, Creative Writing, Discussion, Bookworms and many more. The photo is of our Birdwatching group at the North Cave Wetlands .

If you search for our website:

[www.caves.u3asite.uk](http://www.caves.u3asite.uk)

you will find the full range of activities that we offer. To make contact you can send us a message to [u3aHeatherTurner@gmail.com](mailto:u3aHeatherTurner@gmail.com)



If you prefer to contact us by phone, please call Heather on 01430 424835.

Registered Charity: 1116786  
Website: [www.u3asites.org.uk/caves](http://www.u3asites.org.uk/caves)

### Carol Singing & Christmas Festivities North Cave Village Green



**Free Community Event**

To include mince pies and mulled wine

**Friday 20<sup>th</sup> December from 6.30pm**

Supported by NC Bellringers, NC Church, NC WI, NCFG,

NC Playing Fields, Sports and Social Club

With music by Angie Brown



## BONFIRE AND FIREWORKS EVENING - 5<sup>th</sup> NOVEMBER 2024

Fire to be lit at 6.30pm -

Fireworks from 7pm

**BBQ - Toffee Apples and  
Refreshments from the Bar**

**Entrance Fees: Adults £2,  
Children £1**

**Cash on the evening please**



# Everthorpe Forum



Everthorpe held an Olympic Sunday Brunch on the 11th August, inspired by the final day of the Paris Olympic Games.

There was a delicious brunch of sausage and bacon baps and pancakes with maple syrup and blueberries and some unusual games to play, on



a morning filled with sunshine and laughter.

Along with jenga, archery on a small scale, boules and horseshoe throwing we enjoyed a water balloon throwing competition - yes the balloons eventually split as you had to step back after each toss so that there was a bigger gap between each pair of competitors and people did get slightly wet - and the Diwai Derby - a Papuan New Guinea game where

two teams of four had to race each other with their feet held on planks with loops of cord. The novice class was a straight race to the finish line, the more advanced Derby required negotiation round a traffic cone!

Some not very Olympic medals were awarded to the winning competitors.



# North Cave Parish Council News



**Maintenance:** The footpath gate entrance off Church Street has been repaired along with the bench at the top of Fairfield.

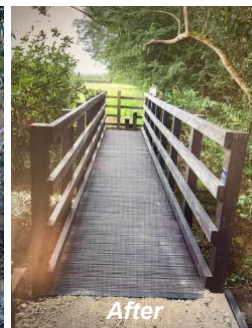
We have a new path-sweeper/handy person starting in September who will be initially working in the main urgent areas; but long term will be going all around the village.

Beck Bridge: (off Low Mill Lane) is now fully restored and ready to be used and enjoyed by all pedestrians.

**Christmas:** Do write in to the Clerk if you have any ideas for a village Christmas activity that involves all the family in some festive fun.

**Next Parish Council meeting is on 15<sup>th</sup> October**

Contact us via our **email:** [clerk@northcave-pc.gov.uk](mailto:clerk@northcave-pc.gov.uk) or visit our website [www.northcave-pc.gov.uk](http://www.northcave-pc.gov.uk)



[pc.gov.uk](http://pc.gov.uk) or call the Clerk: Naomi Wright 01430 425374

North Cave Parish Councillors are all volunteers who want to try to improve the community we live in, spending many hours of their time trying to achieve this as well as attending the monthly public meetings. We hold our meetings in the Village Hall, Westgate, every 3<sup>rd</sup> Tuesday of the month commencing at 7pm, there is an opportunity for you to have your say during the public forum prior to the full council meeting.

Do you see irresponsible dog owners walk on after their dog has fouled?

Stop them damaging your reputation and report them to us in confidence:

## Dog Warden Service

[www.eastriding.gov.uk/dogs](http://www.eastriding.gov.uk/dogs)

[dog.warden@eastriding.gov.uk](mailto:dog.warden@eastriding.gov.uk)

(01482) 396301

Where possible please tell us:

LOCATION OF FOULING

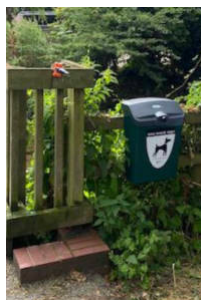
TIME AND DATE OF THE FOULING

NAME AND ADDRESS OF DOG OWNER

DESCRIPTION OF THE DOG/OWNER

To request removal of dog faeces on the street please call (01482) 393939

## Dog Fouling in North Cave



The Parish Council has taken dog fouling around the village very seriously. A new dog poo bin with poo bags has, therefore, been installed at the lower end of Blossoms Lane, by Froscoles Bridge. Since the new bin has been in place, the PC have reported a significant

reduction in fouling.

Residents may have also noticed pink spray on the discarded faeces, with a Clean it Up sign stencilled next to it. The pink chalk spray is environmentally friendly, will wash away, and is completely harmless to wildlife.

Anyone who sees dog owners not picking up after their dogs can report it to the Dog Warden





# 20 mph Zone Trial



North Cave -

Proposed extended 20mph zones -----

Proposed 20mph through-roads only indicated. Subject to highways advice on proximity to 30mph signs, need for repeaters, road markings, costings etc

The Parish Council has submitted an application for North Cave to be considered as one of four areas within the East Riding of Yorkshire to trial a 20mph zone scheme.

In recent years, there have been a number of accidents and near misses in the village. If selected as one of the trial areas, this proactive scheme should help to reduce the number and severity of such incidents.

The anticipated benefits from the implementation of a 20mph zone in North Cave include:

- An enforceable reduction in speeds of vehicles passing through the village
- Safer highways, including, for horse riders and cyclists
- Safer use of the zebra crossing on Westgate by all, including school children
- Reduction of collisions between oncoming vehicles.

In addition to the accidents that have occurred, for many years there has also been an increase in traffic congestion. Not only does

this make it frustrating and unsafe for those who live in the village, but it also means that traffic does not flow as easily as it should thereby increasing the risk of accidents. A slower speed would mean that drivers will be forced to be more careful of how they get around the congestion. This should then reduce the likelihood of an accident and make the village safer for the whole community.

The proposed scheme is shown above. When the Parish Council hears the outcome of the application, it will inform the community.

## Humberside Police

### Non emergencies use 101

Your neighbourhood Policing Team are available to offer advice on crime prevention and to listen and gather information on problems that you may be having in your area. If residents are unable to ring we are also able to visit your home for help and advice. Please note that the Police can now issue dog-fouling tickets.

Many Thanks, Howden Policing Team



Hope you all had a good summer and managed to enjoy some nice days. We

had a few events including supporting The Federation at The Driffeld show and we enjoyed a lovely day at Woldies Lavender farm where we tried foot golf!

Our first meeting of the new term we had an interesting talk and then practised chair yoga lead by Helen Harris.

**3<sup>rd</sup> October:** will be our AGM including making Toothfairy Christmas tree decorations. Nationally, we campaigned successfully for Dental Health Matters to improve the dental situation in the UK. One lucky fairy will then be on display at Beverley Christmas Tree Festival in December.

**Also 31<sup>st</sup> October:** will be our Halloween Trail were you have opportunity to decorate your houses and enter them onto the trail map - see advert for more information and North Cave Community Group, over on Facebook.

**7<sup>th</sup> November:** we will be enjoying Butterflies Chocolate of Pocklington, who doesn't like chocolate?

**5<sup>th</sup> December:** we will once again be having our Christmas meal.

We will be hopefully be doing a display at the War memorial for Remembrance Day, anyone who would like to be involved with this please get in touch with me on 07359720578.

We meet first Thursday of every month in North Cave Village Hall at 19.30hrs. New members always welcome

*Michelle Simpson  
President North Cave WI*

## The WI Halloween Trail

If you would like to decorate your home for Halloween and be included on the trail map with a chance to win a prize, please send the following information:

By email to: [northcavewi@eastyorkshirewi.org.uk](mailto:northcavewi@eastyorkshirewi.org.uk)

By: Friday 25<sup>th</sup> October (latest)

Or fill in this form and leave it in the WI Cafe on a Monday in North Cave Village Hall.

By: Monday 21<sup>st</sup> October (latest)

*Maps will be available to download on the North Cave Community Facebook page by 3pm 31<sup>st</sup> October*

Name	
Address	
Email	
Phone No.	

# North Cave Sports and Social Club

The Club and Bar is open as follows:

Saturday and Sunday from 12 noon.

Bingo on Sunday from 8pm

New members welcome: £10/year

Bookings: Linda Gray Mb 07955 475575

Membership:

Joyce Smith Tel: 01430 423541 / Mb 07840 165114



<https://localgiving.org/north-cave-playing-field-association>



As we mentioned in the last issue, we need to raise **£200,000+**, to refurbish the play area to the standard our children demand of us! To donate go to North Cave Playing Field Association Localgiving fundraising page - <https://localgiving.org/north-cave-playing-field-association>

Donations *of any size* will be welcomed - every little counts. Donations to the Localgiving page can be used for matched funding grant applications. We have been into North Cave School to show the plans to the children and were pleased to receive their constructive comments. We are hoping to be able give them all their requests but, of course, that will mean that we need more money! If we get everything that we would like it will be a very full area!

As regular readers will be aware, the Playing Fields and Play Area are managed and maintained by volunteers - the facilities are not local authority run and maintained. They are held in Trust for the whole community and for ALL of us to enjoy. Your help, in whatever form, is very welcome - be it as a volunteer, in whatever capacity, or supporting our efforts by making donations of time or cash.

## THANK YOU

The Trustees and Committee would like to thank everyone who organised and attended the North Cave Annual Duck Race event on 22nd June. We are delighted to have been chosen to receive a donation, which will assist us with the development and maintenance of the Club and Playing Fields.

## Sports & Social Club North Cave Playing Fields Association AGMs

Date to be announced in due course - expected end of October/November. Please see posters at the Club and on social media.

## GALA DAY 2025

Date to be announced for next summer.

## OTHER EVENTS

Details of any other events will be posted on Facebook or in the Club.

Please remember that the Club and Patio is open at weekends from 12 noon - rugs are available if you would like to sit outside and are feeling a bit chilly - just ask!



# North Cave Coal Exporters Cricket Club

As the cricket season draws to a close, we look back on what's been an incredible past 12 months as cricket came back to North

Cave, with huge success

## On the pitch

With unseasonably wet weather to start the year the 2024 North Cave Coal Exporters' (NCCE) season took some time to get going but our first, second and midweek teams have all had a number of highlights...

Our 1<sup>st</sup> XI have secured five wins, claiming the scalps of Scarborough, Pocklington, Beverley, Kirkella and Hull Zingari, before momentum stalled and unfortunately results took a downturn towards the end of the season, the team finishing 11th in the YPLN Division 1 East.

The 2<sup>nd</sup> XI have built some fantastic momentum through the season, with 10 wins supporting a Division 4 promotion push - but unfortunately they just missed out on securing a top two place. However there are lots of positives to take forward into 2025.

Our midweek team offered a valuable opportunity for newer members to gain experience of senior cricket in a competitive environment, picking up a couple of wins along the way and reaching the semi-final of the cup tournament.

## Excellent events

We kicked off the season with Cricket's Coming Home, celebrating cricket returning to North Cave with an inter-club match, junior cricket, and a visit from guest of honour, former England wicket-keeper and now renowned artist Jack Russell. Jack kindly agreed to paint a landscape of the Playing Fields, which was unveiled in our second



major event of the summer, our Family Day on

the bank holiday Sunday. Thank you to the hundreds of visitors who joined us for the two events - we look forward to planning more events in 2025!

## Thank you to our sponsors

Our successes this season wouldn't have been possible without the support of some hugely valued local businesses agreeing to be our sponsors. We'd like to thank All Connected Plumbing, C&N Commercial Door Services and Voujon Indian Restaurant and Takeaway for their support.

## The next generation

We are passionate about developing the next generation of cricketers and ran All Stars



(ages 5-8) and Dynamos (ages 8-11) coaching programmes this summer. Our under 11s team played 7 games in the Rhodes league this season, competing really well and getting some great playing experience too!

## What's next?

The NCCE committee has been looking forward to develop a five-year plan for the club to continue its progression and the momentum we now have. Here are a few of our objectives we hope to achieve in the coming years...

## Playing and coaching

1. Expand on the success of our Dynamos and All Stars coaching
2. Increase our number of qualified coaches
3. A more structured practice schedule
4. Establish three junior teams
5. Establish a Women's team and a third/development team

## Grounds maintenance

1. Build upon the relationship with the North Cave PFA
2. Improve the quality of the outfield
3. Improve and develop our pitch maintenance knowledge
4. Major square renovation
5. Develop an off square practice area
6. Improve drainage of overall site



# TRANSPORT OPPORTUNITIES

**NORTH CAVE PARISH COUNCIL** has been gathering information relating to Community Transport services run by **GoFar**, for shopping trips and outings, and **MediBus** accessible transport, to assist with attending medical needs appointments. All these services are available for readers of Village Link. To assist you, we have gathered the following information, giving contact details and timetables of shopping trips, which we trust you will find useful.

Why not give them a try and join in one of their many shopping trips - take the opportunity of visiting a different town and shopping centre and perhaps meet up with new friends. Please do give it a try!

We have found **GoFar** and **MediBus** personnel extremely helpful and only too willing to assist you with you needs.

In addition to the East Riding Transport Service Nos 55 and 143, we asked if they might consider extending the No 558 Brough Town Bus Service to North Cave. Unfortunately, having considered this request they have found that there is not enough slack in the existing timetable to be able to extend this service to include North Cave. If there is any change in the future, we will let you know.

In addition to the regular services, **GoFar** offers a hire services for their minibuses for the use of Voluntary and Community Groups in Goole and the surrounding area, including North Cave. These are not self-drive vehicles. All vehicles will have a **MIDAS** trained **GoFar** driver. Groups must become members to use this service.

**PLEASE NOTE** vehicles cannot be used for 'hen' or 'stag' runs.

No 55 and 143 buses stop near the War Memorial on Station Road, printed timetables can be picked up from a library or travel centre.

Please remember to check if services are running and times before travelling.

## MEDiBUS

Door to door accessible transport  
for your medical appointments



### Need help attending a medical appointment?

Medibus services are available to many residents living in the East Riding of Yorkshire. They provide a friendly, door to door, accessible transport solution for those who need to attend medical appointments at hospitals, doctor's surgeries and clinics.

A number of services are currently operated throughout the county, either by East Riding of Yorkshire Council or in partnership with local Community Transport Groups.

Services operate on a pre-booked, first come, first served basis, all you need to do is contact the dedicated Passenger Services Call Centre on **03456 445959** to check seat availability or email [passengerbookings@eastriding.gov.uk](mailto:passengerbookings@eastriding.gov.uk)

**We recommend that you contact us as soon as you receive your medical appointment as demand for seats is very high.**

The call centre is manned by friendly, helpful staff that will be happy give you further information about the services available to you.

**Opening hours are 8.30am to 4.30pm, Monday to Friday**  
(excluding bank holidays)



**Telephone: 03456 445959**

**Email: [passengerbookings@eastriding.gov.uk](mailto:passengerbookings@eastriding.gov.uk)**

To book a seat please contact us by 4pm the day before you wish to travel



**EAST RIDING**  
OF YORKSHIRE COUNCIL

# GOOLE GoFar Timetable and Trips

Here at GoFar, we offer trips to members of the community who through age, sickness or ability may not be able to access regular transport. Our aim is to reduce isolation and promote independence, help to get people out and about, meet new people, have a natter and enjoy a day away from home.

Our operating licence means you have to become a member of **GoFar** to go on a trip. Membership is free - just a form to fill in (there are certain criteria that have to be met) and as the saying goes..."Jobs a goode un"

We offer trips to the coast, garden centres, heritage sites and shopping centres. There are also lunch and afternoon tea outings which have proved to be very popular. Whenever possible our minibuses will pick you up from home and take you back there after the day out. When our workload allows, we try and put on two minibuses so as to give as many people as possible the chance to get out.

Should you require further information about the outings or how to become a member, please feel free to contact the office (see below).

DAY	Destination	South Cave	North Cave	Newport	Gilberdyke	Blacktoft	Sandholme	Eastrington	Howden	Start Time	Cost
Monday	Selby									09.00	£5 £10
Thursday Fortnightly	Anlaby									09.00	£7.00
Friday	Goole									09.00	£7.00

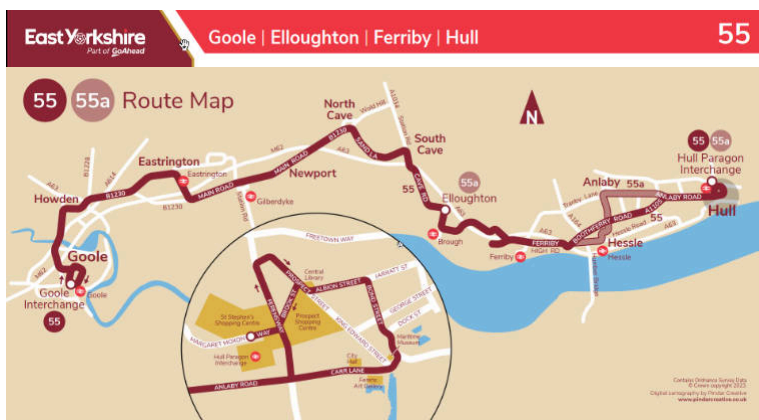


This indicates where the bus will pick up passengers on each route

All routes require members to book a seat. Monday service to Selby **please book by ringing 03456 44 59 59** ERYC passes can be used on the Monday service to Selby (£5 with pass/£10 no pass)

Other routes should be booked by calling the Goole Gofar office on **01405 780 344** Thursday and Friday services can be booked on the Monday before the day you wish to travel All services are very busy so seats cannot be guaranteed. For further information, please contact the Goole GoFar office on **01405 780 344**

Hull Interchange  
Anlaby Road Stadium  
Pickering Road Fiveways  
Bridgehead Business Park  
Ferriby (Crossroads)  
Melton Monks Way West  
Melton South Hunsley School  
Welton (Church)  
Brough (Morrisons)  
Elloughton (EY Depot)  
South Cave (Market Place)  
South Cave (West End)  
Everthorpe HMP Entrance  
Wolds HMP Entrance  
**North Cave (Memorial)**  
Newport (Bridge)  
Gilberdyke Village  
Gilberdyke Village  
Eastrington (Church)  
Howden Longs Corner  
Howden (Memorial)  
Goole Hospital  
Goole Interchange  
Goole North Street



**North Cave to Goole** buses start running from North Cave at 07.40 Monday to Friday with approximately hourly services from 10.00 until 15.22. NOTE: alternate buses only travel as far as Gilberdyke.

**North Cave to Hull** buses start running at 09.24 approximately hourly until 17.01. Return buses run hourly from 06.10 but some involve a change at Elloughton. Note There are no through buses after 14.10.

Buses also run at the weekends - times vary.

For more information visit: <https://www.eastyorkshirebuses.co.uk>

## Monday, Wednesday &amp; Saturday

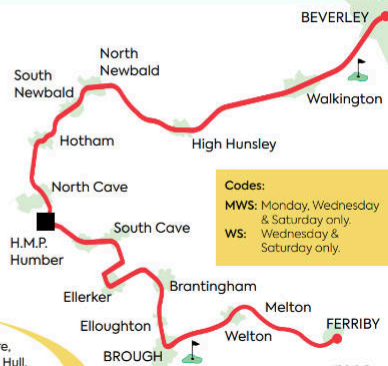
	MWS	WS
Ferriby Melton Road.....	0845	1315
Ferriby Corby Park.....	0850	1320
Melton Bottom.....	0853	1323
Brough Welton Road.....	0858	1328
Brough Morrisons.....	0859	1329
Elloughton EY Depot.....	0905	1335
Brantingham Village.....	0908	1338
Ellerker Village.....	0911	1341
South Cave Market Place.....	0916	1346
South Cave West End.....	0920	1350
H.M.P. Humber Everthorpe.....	0925	1355
H.M.P. Humber Wolds.....	0926	1356
North Cave Memorial.....	0929	1359
Hotham.....	0935	1405
North Newbald Church Mount.....	0940	1410
Walkington L. Weighton Crossroads.....	0953	1423
Beverley Bus Station.....	1005	1435

	MWS	WS
Beverley Bus Station.....	1200	1655
Walkington L. Weighton Crossroads.....	1212	1607
North Newbald Church Mount.....	1225	1720
Hotham.....	1230	1725
North Cave Memorial.....	1237	1732
H.M.P. Humber Wolds.....	1239	1734
H.M.P. Humber Everthorpe.....	1240	1735
South Cave West End.....	1244	1739
South Cave Market Place.....	1248	1743
Ellerker Village.....	1252	1747
Brantingham Village.....	1256	1751
Elloughton EY Depot.....	1300	1755
Brough Morrisons.....	1304	1759
Brough Welton Road.....	1305	1800
Melton Bottom.....	1309	1804
Ferriby Melton Road.....	1311	1806
Ferriby Corby Park.....	1316	1811

This service is provided with financial support from East Riding of Yorkshire Council.

BusLine: 01482 59 29 29  
eastyorkshirebuses.co.uk

Local Bus Travel Centre,  
Paragon Interchange, Hull.



### Mi-Bus Market Weighton – 198 service Operated by Goole GoFar

This is a "Hail & Ride" service running on a Tuesday and Friday between North Cave and Market Weighton. This is a registered bus route which does not require pre-booking, just turn up at the bus stop at the published time and wave the bus down.

No service on bank holidays and No service between Christmas and New Year.

### Timetable:

North Cave	09:30	Market Weighton Town Centre	12:00
Hotham	09:40	Sancton	12:05
South Newbald	09:45	North Newbald	12:10
North Newbald	09:50	South Newbald	12:15
Sancton	09:55	Hotham	12:20
Market Weighton Town Centre	10:00	North Cave	12:30

Tel: 01405 780 344  
www.goolegofer.org.uk



Funded by  
UK Government

## Market Weighton Shopper

As of Tuesday 2nd April, the Goole GoFar "Hail & Ride" service, will be running on a Tuesday & Friday between North Cave and Market Weighton.

Please note - We only carry 12 passengers

We have no problem if passengers wish to continue wearing face masks/coverings and would ask other passengers to respect this decision.

Bus passes accepted or pay the driver **\*Cash only\***

Route: Start at Hanover Housing at 9.30am, travelling to Hotham via Townend Lane. In Hotham, it will pick up at the side of the road outside the Village Hall and then just before the war memorial on the left opposite the bus shelter with Hotham Arms directly in front of you. Then on to Market Weighton via Sancton.

Any queries please call.



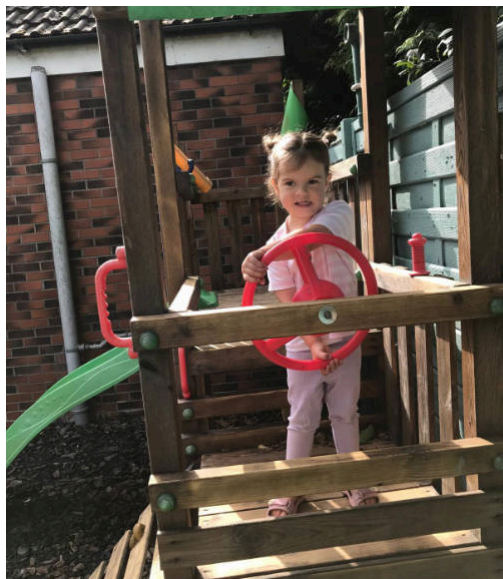
# North Cave Preschool

A big welcome back to all our children and hello to our new starters! We have lots of exciting activities planned for this term, including learning all about ourselves,

exploring numbers and shapes, and discovering maps!

Our garden has a fantastic new look! Huge thanks to Drax Community Fund for the grant, and to Mike from VB Solutions and Darren Gregory Decorating for the amazing work. It looks amazing and the children love it!

Join us for a Pumpkin Party on Sunday 27th October, 4:00-5:30pm at the Village Hall. There will be lots of spooky music, games and treats, so keep eye on our Facebook page for details and tickets. We hope to see you there!



## NORTH CAVE PRESCHOOL



Opening hours:

**Mon - Fri 8:00AM - 5:00PM**

Term-time only, from 20 months

[www.northcave-preschool.co.uk](http://www.northcave-preschool.co.uk)

[northcavepreschool@hotmail.co.uk](mailto:northcavepreschool@hotmail.co.uk)

07968 239303

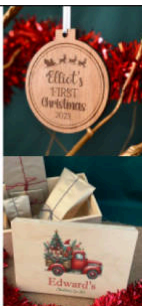
## Personalised Christmas

We have a huge range of Christmas stockings, baubles, sacks, Christmas Eve boxes, pyjamas, and more! All products are personalised especially for you.

**SHOP NOW AT**

[www.personalisedxmas.co.uk](http://www.personalisedxmas.co.uk)

use discount code VL10 for 10% off



**Simon Tomlinson**  
Director



M: 07954 990203

E: [stdpropertyservices@btinternet.com](mailto:stdpropertyservices@btinternet.com)

Property Maintenance  
Refurbishments  
Kitchen Fitting  
New Build Projects  
External Hard Landscape

84 Westgate  
North Cave  
HU15 2NJ

**Westgate  
North Cave  
HU15**



**Home cooked meats and cakes - All Day Breakfasts**

Telephone orders welcome call: **07415094005**

Well behaved dogs on leads welcome.

Wheelchair accessible - Indoor and Garden Seating

High chair available - Card or Cash Payments

**Open: Monday to Friday 8.30 am until 3.30 pm**

**Saturdays 9am until 2pm : Sundays closed**

### Wow Days!

'Topics' form a popular and key part of our curriculum and these usually have a history or geography focus. In order to launch each topic, we hold a 'Wow Day' at the start of each half term in which the children are immersed in activities linked to the new topic. This September, the children in Class 1 and Class 2 came together to learn about their new topic 'How are we making history?'. The children in Class 3 and Class 4 made gingerbread as part of their introduction to their topic on the Tudors.

### School Visits and Open Event

We are extremely proud of our provision and welcome the opportunity to share this with others. If you are interested in a school place for your child, please contact the school office and we would be delighted to show you around and answer any questions that you may have.

We will be holding an open event for families interested in a place in reception for September 2025. This takes place in school on **Thursday 17th October between 4.30pm and 6.30pm**. Please look out for details. We look forward to meeting you!

### Recycling and Sustainability

Within our school, we actively teach the children about recycling and sustainability and every opportunity is taken to conserve energy and recycle where we can. A popular initiative has been our plastic bottle top collection. These are collected within school before being sent away to be recycled, with the amount of bottle tops being exchanged for 'earth points'. These in turn can be used to purchase plastic furniture and equipment made from the recycled plastic. We are grateful to all in our school community for continuing to send the bottle tops in!



*'Each person is celebrated, and their interests and talents are nurtured for the benefit of the whole school community.'*

(SIAMS Report 2024)

## MIRES BECK SUMMER BALL

It was a very special evening for so many people, and the photos tell their own story.



## PLAY IT WITH FLOWERS

Our Wildflower team has been involved in a very exciting project growing and supplying TCV Hollybush with Yorkshire provenance wildflowers for their display in the Leeds Piano Trail Festival.

The Festival transforms public spaces into cultural hubs, enriching the artistic landscape of Leeds and Bradford by placing public pianos, piano planters, piano sculptures and a theatre made from recycled pianos in iconic urban locations. We're extremely proud to be associated with this amazing project, which was supported by Kew Gardens.



## HUMBER BRIDGE COUNTRY PARK

A new conservation project is taking place at the Humber Bridge Country Park. It's called Improving Meadows and Woodlands, and that's exactly what it's all about!

Over 4500 wildflowers and 120 trees, grown by our awesome team of service users at Mires Beck, will be planted on the nature reserve this autumn.



 **TYMPAHEALTH**

# Hearing loss? Ear ache? Blocked ears?

It could just be *wax*

We can help with that & more...  
Book a 30 minute ear & hearing health check-up today

in partnership with the award-winning  
TympaHealth system

## A Beauty Lounge

is now offering  
**NEW**  
Ear & Hearing Health check-ups  
& Ear wax removal using  
Microsuction

**Call Alla on: 07878786952**  
1 Orchard View, Church Street North Cave

# Curlaway


## Unisex Hair Salon

1 Orchard View,  
Church Street,  
North Cave

**TELEPHONE**  
**01430 423712**  
**07432 849406**

Incorporating  
Beauty and Feet Therapist -  
Alla  
"A Beauty Lounge"

 **QUALIFIED  
TEACHER**



## MARTIN SPURGIN

### SCIENCE TUITION

07375 681 034  
martin.spurgin@gmail.com  
HU15, East Yorkshire

**KS3 SCIENCE  
GCSE SCIENCES  
A LEVEL PHYSICS**

**£25 / HR**  
**FLEXIBLE SCHEDULING**

**DBS  
CHECKED**

- Drying
- Brushing
- Dog Clipping & Scissor Finishing
- Ears Cleaned
- Nail Trimming
- Puppy Grooming



## PAMPERED PUPS

... DOG GROOMING ...

# 01430 470027

**24 Westgate, North Cave, Brough HU15 2NJ**  
**www.pamperedpupsgrooming.co.uk**



Claire Kirby  
Foot Health Practitioner

+ Reflexology + Reiki + Hopi Ear Candling + Indian Head Massage  
Mobile or Clinic in: The Old Estate Office, Fox Farm Complex  
Drewton Estate, Drewton, South Cave HU15 2AG [www.walkingonairtherapies.co.uk](http://www.walkingonairtherapies.co.uk)  
Email: [claire@walkingonairtherapies.co.uk](mailto:claire@walkingonairtherapies.co.uk)  
Tel: 07789 595496



ASSOCIATION OF  
REFLEXOLOGISTS



Open for the sale of  
superb quality  
perennials, herbs and  
Yorkshire provenance  
wildflowers.

**Opening hours:**  
**March – September 10 till 4 every day**  
**October – February 10 till 4 Mon-Fri**  
Low Mill Lane, North Cave  
01430 421543 [www.miresbeck.co.uk](http://www.miresbeck.co.uk)







# Newbald Live Music & Events

## Newbald Live Autumn Program

Newbald Live has an exciting and varied program of live events coming up at Newbald Village Hall in the latter part of 2024.

We have a full programme of live music and entertainment between now and Christmas at Newbald Village Hall and tickets for all events are now on sale - online links are on our website: [www.newbald.live](http://www.newbald.live) where you can also sign up for our mailing list which allows you to purchase all tickets with no booking fees.

### Sat 5th Oct - Cortona Theatre presents What Becomes...? Tickets only £12

Cortona Theatre are back after their previous sell-out shows. A riotous, wickedly funny comedy about the dating scene and how it can go so disastrously wrong! Which finishes with a join-in-if-you-want-to Tamla Motown sing-a-long. If you enjoy good night out theatre this is the show for you.

### Sun 6th Oct - Karen Jonas Band, doors 6.30, tickets £15

From Virginia, Karen and her band return after a brilliant gig last year. A great singer-songwriter with quality backing musicians, Karen will play material from her new critically acclaimed album, American Kitsch, alongside old favourites and the occasional superb cover version.

### Sat 15th Oct - Amanda Rheame, doors 7.30, Tickets £15

Multi-award winning Canadian singer-songwriter returns to the UK for the first time in 8 years and Newbald is one of only a handful of shows. Amanda's crystal-clear voice and moving story-telling songwriting style mark her out as a unique performer.

### Weds 23rd Oct - Mark Radcliffe & David Boardman, doors 7.30, Tickets £16

Yes... that Mark Radcliffe... presenter of the BBC Radio 2 Folk Show, regular presenter on BBC 6Music and known for a career that has seen him present the Radio 1 breakfast show and Glastonbury coverage. Mark is a great raconteur and has some stories to tell, but he's also a good musician and with his musical

mate David Boardman will perform their self-penned songs. Already heading for a sell-out, this is another evening's entertainment not to miss.

### Fri 22nd Nov - Blair Dunlop, doors 7.30, tickets £15

Hailed as one of the UK's most accomplished songwriters and BBC Radio 2 Folk Award winner, Blair has played Glastonbury and numerous major festivals since the release of his debut album in 2012. His latest release, Out of the Rain has had great reviews and cements his place as one of the finest songwriters and performers of his generation.

### Sat 21<sup>st</sup> Dec – Elizabeth & Jameson + The Rosewoods, doors 7.30, tickets

Hannah Elizabeth & Griff Jameson have joined forces to create a gorgeous acoustic folk-roots sound which encompasses both their individual musical backgrounds in traditional folk and folk-pop/rock. As this is our Christmas show, the second half will feature The Rosewoods, Hannah & Griff's alter ego covers band perform Christmas classics to get you in the festive spirit!

# Directory Of Organisations And Events

**CATHOLIC CHURCH:** Our Lady of Perpetual Help, Sancton Road, Market Weighton. Mass Saturday 5.30 pm & Sunday 10.30 am. Holy Day Mass 7.00 pm. Weekdays Mass as announced. Fr. David Standen tel. 01430 873202 or email [stmarystjohn@rcdmidd.org.uk](mailto:stmarystjohn@rcdmidd.org.uk)  
website: [www.stmarystjohn.org.uk](http://www.stmarystjohn.org.uk)

**CHURCH OF ENGLAND - ALL SAINTS NORTH CAVE, ST. OSWALD HOTHAM, ST JOHNS NORTH CLIFF:** Contact details for Priest in Charge: The Rev. Barry Worsdale, The Vicarage, Church Lane, North Cave HU15 2GJ Tel: 01430 470716 email: [bworsdale@hotmail.co.uk](mailto:bworsdale@hotmail.co.uk)

**NORTH CAVE WOMEN'S INSTITUTE:** meets in the Village Hall on the **FIRST** Thursday of each month at 7.30pm. There is a varied programme of speakers, demonstrations etc attended by approx. 30 members. A warm welcome is offered to any ladies who would like to join. For information contact Michelle Simpson 07870 661259 or email [northcavewi@eastyorkshirewi.org.uk](mailto:northcavewi@eastyorkshirewi.org.uk)

**EAST RIDING CHILDREN'S CENTRE:** Monday 9.00am until 3.30pm, Tuesday 9.00am until 5.00pm and Wednesday 9.00am until 2.30pm. For more information and to register, call Lisa Howell (family support worker) on 01482 669474

**NORTH CAVE PRE-SCHOOL: VILLAGE HALL:** Open Monday - Friday (term time) 9.00am - 3.00pm plus 'lunch clubs' and 'rising fives' sessions. From age 2½. Contact: Julie Tooke, tel. 01430 441547 / 07968 239303

**NORTH CAVE VILLAGE HALL:** Westgate, available for all kinds of functions. All enquiries to the Booking Secretary: Eva Dayes 01430 423111

**HOTHAM VILLAGE HALL:** Newly refurbished with excellent facilities - available for all kinds of functions. All enquiries to the Booking Clerk Mrs. Pam Johnson, tel. 01430 425285; or Freda Brocklesby, tel. 01430 421095 email: [brocklesby678@btinternet.com](mailto:brocklesby678@btinternet.com)

**NORTH CAVE PLAYING FIELDS ASSOCIATION:** (includes the Play Area). Registered Charity No 523277. Contact Hon. Sec. John Backhouse. e-mail [northcaveplayingfields@gmail.com](mailto:northcaveplayingfields@gmail.com)

**NORTH CAVE SPORTS AND SOCIAL CLUB:** The Pavilion, The Playing Fields, North Cave. Small friendly club. Bookings and Membership £10 - contact J Smith 01430 423541 / Mb 07840165114. All profits go to the Playing Fields and Play Area. General queries contact Hon. Sec. John Backhouse. e-mail [northcavesportsandsocial@gmail.com](mailto:northcavesportsandsocial@gmail.com)

**NORTH CAVE FOOTBALL CLUB:** Two adult football teams, new players welcome. Contact Hon. Sec. John Brattan Mb: 07836 315609

**NORTH CAVE COAL EXPORTERS CRICKET CLUB:** Please see the article in the Dec 2023 issue about the return of cricket to North Cave Playing Fields.  
Contact [NorthCaveCoalies@gmail.com](mailto:NorthCaveCoalies@gmail.com) or call 07938 724151 for more information.

**EAST YORKSHIRE CANOE CLUB:** Sessions every Saturday morning, South Ings Lane, Newport Road, North Cave. Beginners welcome. Contact Charles McCaffrey Tel. 01482 867754 or 07813042417 or [info@eycc.org](mailto:info@eycc.org) For more information see the website: [www.eycc.org](http://www.eycc.org)

**NORTH CAVE INDOOR BOWLS:** Townend Lane, North Cave, tel. 01430 421378. Open 10.30am to 10.30pm in Winter, from early September until the end of April.

**CAVE PLAYERS:** Amateur Drama Group. Rehearsals take place in South Cave at the WI Hall and performances take place in North Cave Village Hall. More Information Contact: Chair, Sharon 01482 840404 or Sec. Neil, 01430 424497.



For tickets, contact Malcolm 01430 422073 or visit [www.caveplayers.co.uk](http://www.caveplayers.co.uk)

**DENTIST:** Church Street, South Cave. Weekdays 9am to 6pm. Saturdays 9.15am to 12 noon. By appointment, tel. 01430 423826

**OPTICIAN:** John Tomlinson based in North Newbald. Tel. 0800 9775994

**SOUTH CAVE SCOUTS:** Beavers: 6-8s, Cubs: 8-10½s, Scouts: 10½-14s, Explorer Scouts: 14-18s. If To add a name to the Group's waiting list email: [southcavescoutingmembership@gmail.com](mailto:southcavescoutingmembership@gmail.com). Anyone with a general enquiry should contact Claire Moverley, Assistant Group Scout Leader on 07803247324.

**RAINBOWS, BROWNIES AND GUIDES:** 01430 421504 or <https://www.girlguiding.org.uk>

**EAST RIDING CARERS' SUPPORT SERVICE:** tel. 0800 9176844

**MEDIBUS:** Door to door service to Beverley, Cottingham, Hull Royal, Goole and Scunthorpe Hospitals from your front door. tel. 03456 445959 (charged at local rate).

### **DOCTORS' SURGERIES:**

#### **South Cave:**

Emergencies and Enquiries	424764
Appointments	422206
Repeat prescriptions	422495

#### **Gilberdyke:**

Emergencies and Enquiries	440225
Appointments	440225
Repeat prescriptions	440225

**MOBILE LIBRARY:** Tel. 01482 392749 or check online <https://www.eastridinglibraries.co.uk>

#### **North Cave:**

*Wednesday - every 4 wks from 24 May 2023; outside 30 Newport Road 10.05- 10.20*

*Thursday - every 4 wks from 17 Aug 2023; outside 19 Nordham 15.15 - 16.15*

**POST OFFICE:** At Londis Cave News, Church Street, Weekdays 6am - 8pm, Weekends 7am - 8pm

**POLICE:** For non-emergency calls contact your Local Policing Team, tel. 101 (24-7), or e-mail

#### **Police Community Support Officers:**

PS Keith Robinson	email <a href="mailto:keith.robinson@humberside.pnn.police.uk">keith.robinson@humberside.pnn.police.uk</a>
PC Jack Dominic	email <a href="mailto:jack.dominic@humberside.pnn.police.uk">jack.dominic@humberside.pnn.police.uk</a>
PCSO Phoebe Buttle	email <a href="mailto:phoebe.buttle@humberside.pnn.police.uk">phoebe.buttle@humberside.pnn.police.uk</a>

**BELL-RINGING:** Join us at All Saints' church on practice night Tuesdays from 7:30-9pm or before Sunday morning service from 10:30-11, or contact Bill on 470868 for more details.

**ANTI-SOCIAL BEHAVIOUR:** (Environmental Services)

Noise etc. S Shuttleworth, tel. 01482 396203, out of office hours tel. 01482 393939

### **YOUR LOCAL COUNTY COUNCILLORS:**

Victoria Aitken (NCave) tel. 07721 411620 | Nigel Wilkinson (Eastrington) tel. 07717 364525  
Linda Bayram (NCave) 07956 310720 [linda@cbayram.karoo.co.uk](mailto:linda@cbayram.karoo.co.uk)

**NORTH CAVE PARISH COUNCIL:** Contact the Clerk: Naomi Wright 22 Beck Road North Cave HU15 2JH Tel: 01430 425374 Email: [clerknorthcavepc@hotmail.co.uk](mailto:clerknorthcavepc@hotmail.co.uk) Hours: Mon, Tues, Thurs, Fri 13.30-17.30

**NORTH CAVE FLOOD WARDEN:** Mr Stephen Thackeray, 1 Blanshards Lane Mb 07967 165337

**CAVES U3A:** Speakers meetings at Cave Castle on the first Monday in the month at 2pm except on Bank holidays when it is deferred for a week. Contact Sec. Bernice Maitland. Tel. 01430 421960

# Local Businesses - Use them or lose them

Accommodation for visitors	Nordham Cottages	9 and 11 Nordham, North Cave	07951 745033 / 01430 422266
Accommodation for visitors	Belgrave Cottage, Filey	Belgrave Farm, North Cave	07535 633818
Accommodation for visitors	Bennys Cottage	21A Nordham, North Cave	0787336348 / 07848951730
Accountancy	TaxAssist Accountants	12 Westgate, North Cave	01482 235363
Aerial / Satellite /lcd installations	Chris Chapman	Westgate, North Cave	07739 583300 / 01482 342944
Auctioneer and Valuers	Hawley Auctioneer and Valuers	Albion House, Westgate	01482 868193
Bespoke Tailor and Shirtmaker	Robert James	36 Main Street, Hotham	01430 425435
Boarding Cattery	The Cat's Cradle (Vicky Herd)	Cavewood Farm Common Lane	01430 425554
Boarding Cattery	The Mews Cattery	Market Weighton Road	01739 422605
Boarding Cattery	Evergreen (Sarah Page)	6 Station Road	01430 421975
BP Service Station 7am-10 pm	Triangle Garage	Newport Road	01430 424119
Builder and Joiner	Gav Lewis	2 Fairfield	07904 091038 / 01430 424479
Building Contractors	Greenwood and Ford	Low Road, Everthorpe	01430 423831
Café and Deli	The Old Bank Café and Deli	Westgate, North Cave	07415 094005
Canvas prints from your images	Tony Roach FineArtCave	Common Lane	01430 423063
Carpet & Hardfloor Cleaning	Excellence Floorcare (Mark)	23 Newport Road, North Cave	07919 103138
Childcare	Wildflowers childminder	North Cave	07903 870865
Chimney Sweep	Paul Dobson, Cross Solutions	17 Springfield Avenue, Brough	07961 708669
Chiropractor	Cave Chiro, Louise Marshman	Westcote Fold, S. Cave, HU15 2GU	01757 700500
Clinical hypnotherapist	Susan Dukes NIPCH	3 Westgate	01430 425450
Computer services repairs sales	Daniel's Laptops	Newport Road	01430 421014
Creative exteriors and Fascias	Lee Garton	6 Westgate	01430 421268
Dog Grooming	Posh Paws	North Cave	01430 422605
Dog Grooming	Pampered Pups	Westgate	01430 470027
Dog Grooming	Doggie Style	16 Newport Road North Cave	07834 225531
Driving School	North Cave School of Motoring	34 Beck Road, Everthorpe	01430 421944
Electrical Appliances	Steve Mews		07578 878007
Electrical Contractor	David Giles	Denmark Rise, North Cave	07778 644002 / 07825 092868
Electrical Goods - Repairs	Nigel Cundill	.	07962 467111
Electrician - Domestic	J B Electrical Services	38 Beck Road, Everthorpe HU15 2JH	07983 991316 / 01430 423291
Electrical Services	Gary Malton	gary.malton@icloud.com	07399 481550
Equestrian Bedding	T Harrison	21 Newport Road	01430 422560
Equestrian Outlet	Haggerstons	Newport Road	01430 626118
Estate Agents	Chris Clubley and Co	Skillings Lane, Brough	01482 662211
Fish & Chip Shop & Mobile Van	The Catch	20A Westgate, North Cave	01430 424550
Funeral Services	Hortons	The Old Police Box	01430 423031
Garden maintenance service	Pure Gardens (A Underwood)	.	07904 738196 / 01430 425211
Gardening, patios, landscape, fencing	ROS Solutions, Matthew Stubbins	Main Street, Hotham	07854 493175
GMP Garden Services	T Vessey-Baitson	35 Fairfield	07800 896679 / 01430 421937
Graphic Design and Print	Innovative Graphics Limited	christine@innovative-graphics.co.uk	07815 881103
Graphic Design and Print	Kinroy Design	Canal Side West, Newport	07921 728235
Graphic Design and Print	Little Graphic Design Company	Beck Road, Everthorpe	01430 424317
Hairdressing + Beauty Therapist	Curlaway + A Beauty Lounge	1 Orchard View, Church Street	01430 423712
Improve health and fitness	Neil Thompson Strength & Fitness	South Cave	07902 462387
Joiner	Neville Dykes	14 Newport Road	01430 422977
Joiner	M J Morton	1 Westgate	01430 470990
Landscape & Property Maintenance	Turner & Wheel	39 Church St, North Cave	07939 427721 / 01430 235238
Landscape Architects (Chartered)	2B Landscape Consultancy Ltd	<a href="http://www.2bconsultancy.co.uk">www.2bconsultancy.co.uk</a>	01430 423204
Landscape Contractor	Humber Landscapes	8 Nordham	07715 522441 / 01430 470920
Livery yard, riding lessons	Sue Body	South Ings Lane	01430 422238
Nails and Beauty	Iconic Nails & Beauty	Low Lea, Main Road, Newport	07947546725
Newsagent, Post Office & Store	North Cave News	40 Church Street 6-8 daily 7-8 wkld	01430 422363
Optician	J Tomlinson	Newbald	0800 9775994
Painter and Decorator	Andrew James	10 Blackthorn Close, Newport	07926 813281 / 01482 651952

Business/Service	Name	Address	Telephone Number
Painter and Decorator	Craig Lane	24 Westgate	07825 325547 / 01430 440471
Piano, Singing, Theory & Drama	Margaret Iveson, Teacher	Newport Road	07951144820 / 01430 422789
Plants, vegetables, eggs	Marjoram Nurseries	Low Road, Everthorpe	01430 424493
Play - Adventure	William's Den	Wold Hill, North Cave	01430 472230
Plumber	AWS Plumbing and Heating	23 Church Street	07886 026993 / 01430 470827
Plumber	G Greaves Plumbing & Heating	68 Main Road, Newport	01430 266130 / 07429 173175
Precision Engineers & Machinists	John Dunn Engineering	Cottage Farm Works, Breck Lane	01430 424957
Prison Printshop	Richard Johnson	HMP Humber	01430 426507
Property Maintenance	Simon Tomlinson	84 Westgate, North Cave	07954 990203
Pub and Restaurant	Hotham Arms	2 Main Street, Hotham	01430 422939
Public House	The White Hart	20 Westgate, North Cave	01430 470940
Reflexology/Reiki/Foot care	Walking on Air Therapies	2 Littlemoor Close, North Cave	07789 595492
Restaurant / Café	William's Den	Wold Hill, North Cave	01430 472230
Sand and Gravel	Breedon, North Cave Quarry	The Quarry, Newport Road	01430 421503
Science Tutor. Ages 11 - 16	Martin Spurgin	10 Fountains Way, North Way	07375 681034
Sewing Services	Michelle Simpson	7 Manor Road, North Cave	07870 661259
Singing	Marissa Steer, Teacher	22 Westgate, North Cave	07572 169215
Snacks and drinks, orders	The Little Butty Bus	North Cave Wetlands	07766 117316
Sports Massage	Contour Therapies	8 Denmark Rise	01430 470601
Tailoress for alterations etc.	Mrs Rosemary Cousins	7 Station Road, North Cave	01430 424397
Therapy training	<a href="http://www.inspiretherapytraining.com">www.inspiretherapytraining.com</a>	Manor Road, North Cave	07917 097419
Timber Merchants and Logs	Geenix Sawmills	Crosslands Lane, North Cave	07544 861005
Tree/hedge cutting and decking	Andy Davey	1A Main Street, Hotham	07957 881298
Tree Surgery and Consultancy	East Yorkshire Tree Company	North Cave	01430 423966
Tree Surgery, Stump Grinding	D R Minns Tree Surgery	Beck Road, Everthorpe	07449 002674
Vegetable oil processor	Brocklesby Ltd.	Crossland Lane	01430 424900
Venue dressing	Something Borrowed	North Cave	07450 008224
Vintage Crockery,Cutlery & Crystal Hire	Take That & Tea Party - Olwyn Latham	The Owl House, 6 Milestone Court	07833 432539
Wedding Services	Style My Venue - Liz Ewing	10 Church Street, North Cave	07812 422007 / 01430 424115
Wildflowers and Plants	Mires Beck Nursery	Low Mill Lane, off Mires Lane	01430 421543
Wills Estate Administration	Swan Solicitors (David Rhodes )	Professional service in your home	01482 631864

### Are you a business?

Would you like a free listing in the 'Local Businesses - Use them or lose them' table?  
Contact: The Editor giving information, as shown above.

Advertising space - if you would like to advertise, please contact The Editor for rates and availability.

## Village Link Contacts

Bill/Liz Blackledge

Editor/Typesetter/Webmaster

E-mail [editor@villagelink.info](mailto:editor@villagelink.info)

Simon Plows

Delivery & Distribution

Telephone 01430 423204

Sarah

Contact/School

Telephone 07841 052219

Telephone 01430 422551

**Content for next issue (December - January) to us by 5 November please**

## NEVILLE DYKES

JOINER

NOW FITS uPVC WINDOWS,

FASCIAS AND SOFFITS

ALL TYPES OF WOODEN FENCING

**Telephone: 01430 422977**



## J B Electrical Contractors

Established 2009



**Telephone - 01430 423291 / 07983 991316**

38 Beck Road, Everthorpe, Brough, East Yorkshire HU15 2JH



New Installation - Full & Part Rewires  
Consumer Unit Upgrades & Replacement  
Extra Socket, Switches & lights In Outdoor  
Electrical Inspection & Testing  
All Types Of Repair Work & Fault Finding  
No Call Out Fee & Free Quotations  
Fast & Friendly Professional Service  
No Job Too Big or Small & Fully Insured



**[www.jbelectrical.biz](http://www.jbelectrical.biz)**





# HAWLEYS

## AUCTIONEERS & VALUERS

Single items to full homes cleared Valuations given for insurance, probate and sale

Albion House, Westgate, North Cave, HU15 2NJ Contact John or

Caroline Hawley - 01482 868193 Mobiles: John 07850 225805

Caroline 07980 624583

email: [info@hawleys.info](mailto:info@hawleys.info) [www.hawleys.info](http://www.hawleys.info)

## Nordham Cottages

[www.nordhamcottages.co.uk](http://www.nordhamcottages.co.uk)

Seven cottages in Nordham and Hotham:  
Visit England approved, 4, 4\* GOLD and 5\* GOLD  
Offering accommodation for 2 to 6 guests:

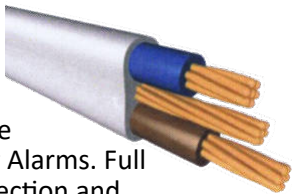
Apple Loft, Bay Tree Cottage, The Hideaway,  
Horseshoe Cottage, Bakers Cottage,  
and Ruth's Cottage.

NEW: The Old Stables, 5\* GOLD is accessible to all,  
with 2 ensuite bedrooms.

Reservations taken for weekends/ midweek/ weekly  
stays, and monthly lets.

For more information, contact Louise Martin  
07951745033/ [louisem200@hotmail.co.uk](mailto:louisem200@hotmail.co.uk)

# D.A. GILES (ELECTRICAL) LTD.



New builds,  
Re-wires, Fire  
and Intruder Alarms. Full  
testing, inspection and  
certification. New  
consumer unit (fuse board). CCTV.  
Large or small - we cover them all.

Free quotations:

Tel: 01430 470842

Mb: 07778 644002

Mb: 07825 092868



# ACCOUNTANCY SERVICES

Focus on what you do best and let us take care of the  
distractions. We specialise in supporting small businesses  
and can help with:

- Self Assessment Tax Returns
- Bookkeeping & VAT
- Business Accounts
- Payroll & RTI
- Corporation Tax
- ...and much more

We are based in Beverley and North Cave and cover  
all surrounding areas. To arrange your free, no  
obligation, meeting call us today on **01482 235363** or  
visit us online at [www.taxassist.co.uk/beverley](http://www.taxassist.co.uk/beverley).



# Chimney Sweep



- Chimneys Swept from £40 • Log Burner Servicing & Repairs •
- HETAS approved sweep •
- HETAS registered installer of Log Burners, Multi-Fuel Stoves & Chimney Liners •

Paul Dobson Tel: 07961 708669

Email: [crosssolutions@yahoo.co.uk](mailto:crosssolutions@yahoo.co.uk)

17 Springfield Avenue, Brough, HU15 1BU

# Hotham Hoedown

I just thought I would send you an update from Friday 6th September when we hosted a Hoedown at the Village Hall in Hotham. This was a resounding success, everyone thoroughly enjoyed the live entertainment by Richard Sylvester, our country singer.

I'd like to take this opportunity to thank the Butty bus (Lisa) who supplied our food, Richard our singer and to all of you who came to our Hoedown. Let's hope we can host more events like this, that brings everyone together, in the future!

Regards  
Caroline Dennis



## NORTH CAVE INDOOR BOWLING CLUB

Would you like to come and try Indoor Bowls?  
Gentle exercise in a warm, friendly, environment?  
Open every day from 10:30a.m.

Call and have a cup of coffee - see what it's all about  
Townend Lane, North Cave, HU15 2LZ



Call: 01430 421378 - Email: [northcavebowls@btinternet.com](mailto:northcavebowls@btinternet.com) - [www.northcavebowls.co.uk](http://www.northcavebowls.co.uk)

## William's Den

Where Imagination Runs Wild

**DID YOU KNOW...**

Everybody is welcome to pop in to our Restaurant – no kids required!!

Our (ex 5 star hotel) Head Chef and her team lovingly prepare our award winning homemade food.

Try it – you'll be surprised!

**Restaurant Open**

10am – 3pm

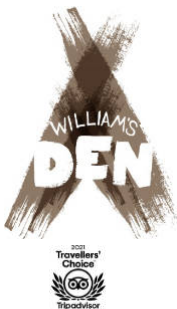
Monday - Sunday (school holidays)

Friday – Sunday (term time)

Check website for details:  
[www.williamsden.co.uk](http://www.williamsden.co.uk)

or phone:

01430 472230



## G. GREAVES PLUMBING & HEATING

Tel: 01430 266 130

Mob: 07429 173 175

email:  
[gavdaplumber@hotmail.co.uk](mailto:gavdaplumber@hotmail.co.uk)

68 MAIN ROAD  
NEWPORT  
BROUGH  
HU15 2PP



**Specialist  
Heating Systems**

- Kitchen & Bathroom Installations
- Central Heating Systems
- Boiler Breakdowns



- Annual Service and Landlord Safety Inspections & Repairs
- No Call Out Charges
- Free Quotes

# LOCAL EYECARE & HEARING CARE

WITH THE  
EMPHASIS  
ON CARE

- THOROUGH EYE  
EXAMINATION
- CONTINUITY OF  
CARE
- GREAT CHOICE  
OF FRAMES
- IMPARTIAL  
ADVICE



John  
Tomlinson

**optician**

The Best in Eyecare Since 1991

BOOK ONLINE OR  
CALL FOR  
APPOINTMENT

**CALL FREE: 0800 977 5994**

**[www.opticians.book.app](http://www.opticians.book.app)**

**Westfield House, North Newbald, YO43 4SE**